

## HYDRAULIC TOOLS

**LARZEP** offers a wide range of tools for different applications: Chain cutters, Cable cutters, Nut Splitters, Pullers, Spread cylinders, Dynamometers and Load cells, Toe jacks, Lifting cushions, Square drive and Hexagon Torque wrenches, Punching heads and Crimping tools.

- ✓ Chain cutters designed for chain and high resistance bar cutting.  
Available with either built-in pump, or powered by a separate pump.
- ✓ Cable cutters for operation in any place and position, the cable cutters make heavy jobs easier in forced and uncomfortable positions or on difficult access places like poles, shafts or high-voltage towers.
- ✓ Nut Splitters designed to work either cutting or deforming nuts, depending on the material grade.
- ✓ Wide range of Pullers from 5 to 50 Tn to cover most pulling applications.  
Available in 2 and 3 Jaws puller,  
Cross Bearing puller, Bearing Cup puller, Bearing puller and Self-centering pullers.
- ✓ Spread cylinders are used for many tasks in confined access situations.
- ✓ Dynamometers from 5 to 100 Tn, are used to measure tension.  
Load Cells from 5 to 150 Tn, measure compression loads.  
Used in pile testing applications.
- ✓ Toe jacks are compact and lightweight for easy transportation.  
Are used for lifting load in reduced height access situations.
- ✓ Pneumatic lifting cushions made of friction resistant material.  
Often used in rescue operations, rubble lifting in collapses and other lifting applications with very limited access.
- ✓ Flange spreaders used for safely pipe flange opening.



# TOOLS

- ✓ Torque wrenches are designed to tighten and loosen nuts requiring accurate high torque during bolt tightening and maximum torque during bolt loosening.
- ✓ Lightweight, easy transportable punching heads are designed for round, square or oblong puncher holes in mild steel sheets.
- ✓ Compression crimping tools for low, medium and high voltage terminals and sleeves.

Models	Tool type	Capacity		Page
		Tn (kN)		
<b>CK</b>	Hydraulic Chain Cutters	13-112 (135-1.120)		<b>126</b>
<b>CC</b>	Hydraulic Cable Cutters	5-43 (50-437)		<b>128</b>
<b>CN</b>	Hydraulic Nut Splitters	13-113 (135-1.134)		<b>130</b>
<b>FU - FV - FZ</b>	Hydraulic Pullers	5-50		<b>132</b>
<b>FA</b>	Self-Centering Pullers	10-50		<b>135</b>
<b>CY</b>	Spread Cylinders	0.8-15 (8-150)		<b>136</b>
<b>CT - C</b>	Dynamometers & Load Cells	5-150 (44-1.449)		<b>138</b>
<b>AA</b>	Lifting Cushions	6-65		<b>140</b>
<b>AU</b>	Hydraulic Toe Jacks	20-60		<b>141</b>
<b>BS</b>	Flange Spreaders	5-10		<b>142</b>
<b>LS</b>	Square Drive Hydraulic Torque Wrenches	1.898-34.079 Nm		<b>144</b>
<b>LX</b>	Low Profile Hydraulic Hexagon Torque Wrenches	2.712-47.450 Nm		<b>148</b>
<b>PH</b>	Portable Hydraulic Punching Heads	15-45		<b>152</b>
<b>CB - CH - CM</b>	Hydraulic Crimping Tools	5-100		<b>153</b>

**HYDRAULIC CHAIN CUTTERS**



- ✓ Maximum working pressure 700 bar.
- ✓ CK0016 model includes an integral built-in hand pump.  
Other models are powered by an external hand, air, electric, or petrol pump.
- ✓ CK0216, CK0230 and CK0250 models are double acting, for fast retraction.
- ✓ CK0116 and CK0216 are not equipped with handle.
- ✓ All models are provided with a male ball quick coupler AZ3321.
- ✓ Available battery powered portable pump HAB1102.

**HAB1102**  
Battery Powered Portable Hydraulic Pump



P.101

**Z12107**  
Air Hydraulic Pump



P.86

**HBM**  
Manual Powerpack

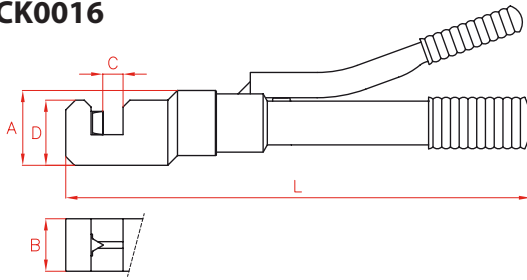


P.88

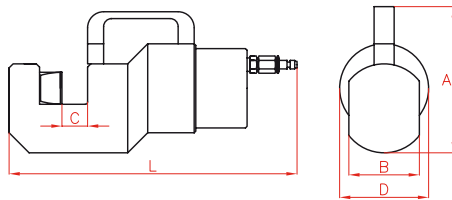


HYDRAULIC CHAIN CUTTERS

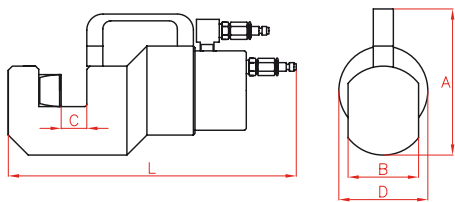
CK0016



CK0116 - CK0130



CK0216 - CK0230 - CK0250



Type	<b>CK</b>
Capacity	<b>13 - 112 Tn</b>
Chain	<b>max. 50 mm</b>
Max. pressure	<b>700 bar</b>

Model	Replacement Blades	
	Mobile	Fixed
CK0016	CRK16/1	CRK16/2
CK0116	CRK16/1	CRK16/2
CK0130	CRK30/1	CRK30/2
CK0216	CRK16/1	CRK16/2
CK0230	CRK30/1	CRK30/2
CK0250	CRK50/1	CRK50/2

\* maximum ø

Model	Capacity	Oil Cap.	Weight	A	B	C	D	L	Chain*	Strength	Bar*	Strength
LARZEP	kN	cm <sup>3</sup>	kg	mm	mm	mm	mm	mm	mm	by grades	mm	N/mm <sup>2</sup>
CK0016	135	-	5,8	81,5	54	20	68	489	19	28 - 43	19	700
									14	60 - 80	15	1.000
CK0116	135	38	4,8	81,5	54	19,5	68	290	19	28 - 43	19	700
									14	60 - 80	13	1.400
											11	1.600
CK0130	390	182	16,8	183	88	31,5	113	360	30	28 - 43	30	700
									20	60 - 80	25	1.000
CK0216	135	38	8,4	126	54	19,5	81	343	19	28 - 43	19	700
									14	60 - 80	15	1.000
											13	1.400
CK0230	345	161	16,0	183	88	30	113	412	30	28 - 43	30	700
									20	60 - 80	25	1.000
											20	1.400
CK0250	1.120	842	68,0	228	120	52	207	475	50	28 - 43	50	700
									40	60 - 80	45	1.000
											40	1.400
											35	1.600

## HYDRAULIC CABLE CUTTERS



- ✓ CC0260 model is double acting and is especially recommended for sub-sea applications. Optionally we can supply special seal kits for deep water operation.
- ✓ CC0018, CC0040 and CC0075 models are self contained, with integral built-in pump. These tools are supplied with a relief valve to prevent overload.
- ✓ Single acting models have spring return.
- ✓ Rotating heads for easy operation.
- ✓ Installing replacement blades is a simple operation.
- ✓ All models are provided with a male ball quick coupler AZ3321.
- ✓ CC0190 and CC01120 are equipped with handle.
- ✓ Carry box included for easy transport and tool protection.

**HAB1102**

Battery Powered Portable Hydraulic Pump



P.101

**Z12107**

Air Hydraulic Pump



P.86

**HYDRAULIC CABLE CUTTERS**



Type

**CC**

Capacity

**5 - 43 Tn**

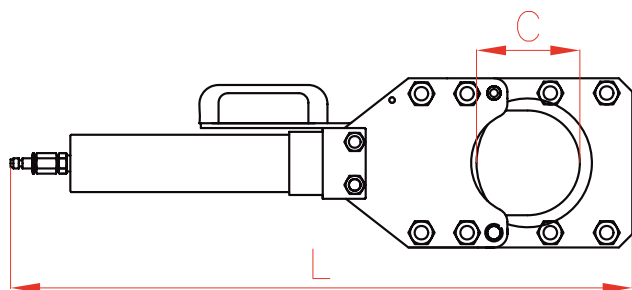
Cable

**max. 120 mm**

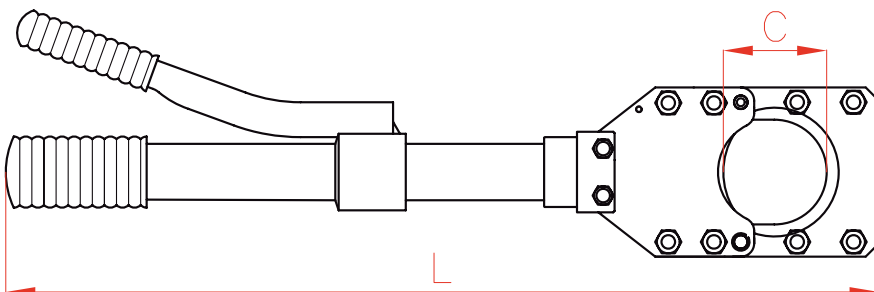
Max. pressure

**700 bar**

**CC0118 - CC0140 - CC0160 - CC0175 - CC0190 - CC01120**



**CC0018 - CC0040 - CC0075**



Model	Replacement Blades
LARZEP	LARZEP
CC0018	CRC18
CC0040	CRC35-40
CC0075	CRC75
CC0118	CRC18
CC0140	CRC35-40
CC0160	CRC0160
CC0175	CRC75
CC0190	CRC0190
CC01120	CRC01120
CC0260	CRC0160

Model	Capacity	Oil Capacity	L	C	Weight	Wire Rope ø (Al)	Cable ø				Wire Rope ø (Steel) <sup>1)</sup>	
							Cable	Telephone	Lead Shielded	Underground	Cable	Wire
LARZEP	kN	cm <sup>3</sup>	mm	mm	kg	mm	mm	mm	mm	mm	mm	
CC0018	70	-	385	19	2,8	18	18	18	18	18	1	
CC0040	135	-	490	41	5,6	40	40	40	40	32	1	
CC0075	70	-	650	77	6,6	40	75	75	75	*	*	
CC0118	70	24	212	18	2,0	18	18	18	18	18	1	
CC0140	135	86	292	40	5,3	40	40	40	40	32	1	
CC0160	437	420	388	64	15,8	60	60	60	60	60	2	
CC0175	70	74	451	75	5,5	40	75	75	75	*	*	
CC0190	109	149	535	90	10,0	35	90	90	90	*	*	
CC01120	109	203	635	120	11,7	35	120	120	120	*	*	
CC0260	390	431	480	64	24,6	60	60	60	60	60	2	

\* This unit is not designed to cut this material. Any attempt to do so may result in personal injury or damage to the unit and will void the warranty.

Shown diameters are only for guidance.

1) Max. Strength 1.800 N/mm<sup>2</sup>

## HYDRAULIC NUT SPLITTERS



- ✓ Designed to work in two different ways, depending on the material grade of the nuts, either cutting or deforming them, allowing nut removal.
- ✓ CN0024 Model with integral pump, provides more confort.
- ✓ CN0224 Model especially designed to cut guard rail nuts.
- ✓ CN0324 Model, with open design, especially suitable for limited access situations.
- ✓ Plastic carry box included for easy transport and tool protection.
- ✓ Relief valve on CN0024 to avoid overloading.
- ✓ All models are provided with a male ball quick coupler AZ3321.

Model	Capacity	Volume	Length	Weight	Quality			Minimun	Replacement Blade
					12.9	8.8	5.6		
LARZEP	kN	cm <sup>3</sup>	mm	kg	12.9	8.8	5.6	ASTM A 194	LARZEP
CN0024	135	-	471	4,8	M24 7/8"	M27 1"	M27 1"	M12 1/2"	CRN24
CN0152	437	296	368	14,0	M52 2"	M52 2"	M52 2"	M27 1"	CRN33-52
CN0180	1.134	479	435	40,0	M80 3"	M80 3"	M80 3"	M68 2-1/2"	CRN0180
CN0224	135	47	207	3,7	M24 7/8"	M24 7/8"	M24 7/8"	M10 3/8"	CRN0224
CN0233	345	156	270	12,2	M33 2"	M36 1-1/4"	M36 1-1/4"	M24 7/8"	CRN0233
CN0324	135	49	296	5,0	-	M24 7/8"	M24 7/8"	M10 3/8"	CRN0324



**HAB1102**

Battery Powered Portable Hydraulic Pump



P.101

**Z12107**

Air Hydraulic Pump



P.86

**HYDRAULIC NUT SPLITTERS**



Type

**CN**

Capacity

**13 - 113 Tn**

Nut

**M10 - M80 mm**

Max. pressure

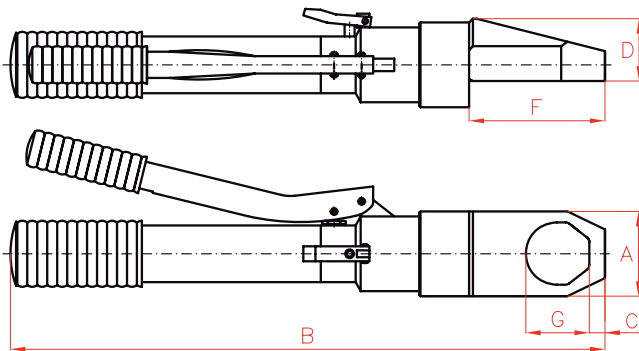
**700 bar**



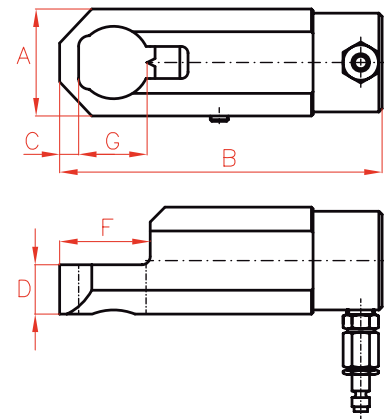
**WARNING**

The tool cuts materials with a resistance lower than 500 N/mm<sup>2</sup> and deforms all materials up to a resistance of 1.250 N/mm<sup>2</sup>.

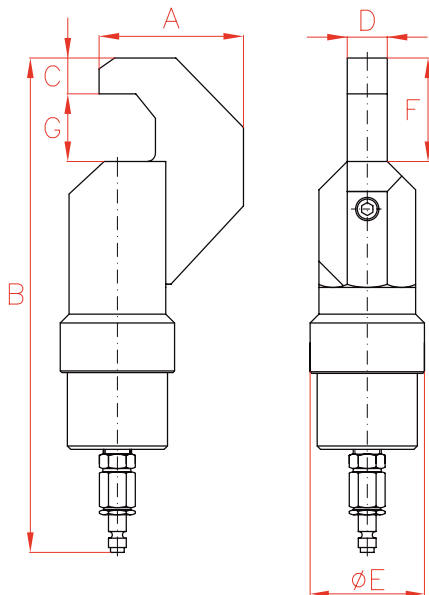
**CN0024**



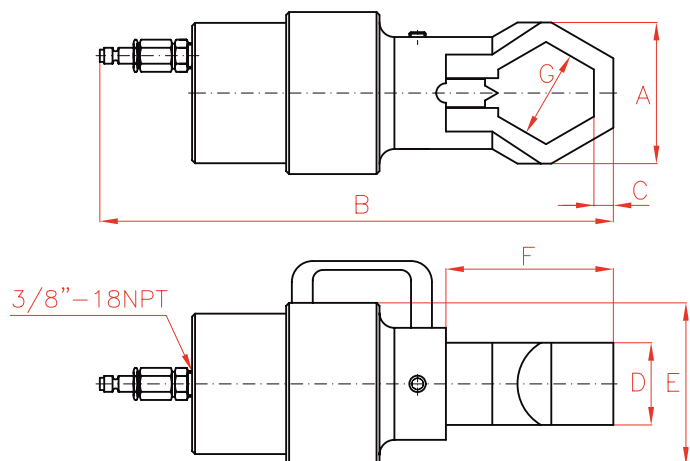
**CN0224-CN0233**



**CN0324**



**CN0152-CN0180**



Model	A	B	C	D	E	F	G
LARZEP	mm	mm	mm	mm	mm	mm	mm
CN0024	68	471	12,5	51	-	108	48
CN0152	131	368	27	55	120	136	83
CN0180	185	435	37	90	200	202	120
CN0224	65	207	12	30	-	56	40
CN0233	106	270	24	55	-	84	59
CN0324	87	296	22	24	69	62	38

Model	Nut	Across Flats
LARZEP	ASTM A 194	mm
CN0024	M12 - M27	19 - 41
CN0152	M27 - M52	41 - 80
CN0180	M68 - M80	100 - 115
CN0224	M10 - M24	17 - 36
CN0233	M24 - M36	36 - 55
CN0324	M10 - M24	17 - 36

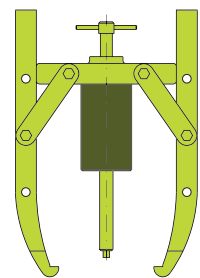


**HYDRAULIC PULLERS**

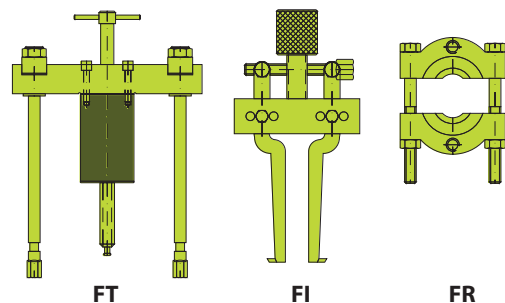


- ✓ Wide range of models from 5 to 50 Tn suitable for most maintenance pulling applications.
- ✓ All pullers are delivered in a strong wooden box for ease of transport and storage.
- ✓ Manufactured in high quality forged steel, includes hydraulic and all mechanical components.
- ✓ Hydraulic part includes: cylinder, pump, hose, pressure gauge, gauge adaptor, male coupling and hollow saddle.
- ✓ Mechanic part includes:
  - 2 Jaws puller (FX) / 3 Jaws puller (FV)
  - Complete Cross Bearing puller (FZ) that includes:
    - Simple Cross Bearing puller (FT) with long and short extension pieces,
    - Bearing Cup puller (FI), Bearing puller (FR)
- ✓ Universal puller (FU), Jaws pullers (FX and FV) and Cross Bearing puller (FT), include hydraulic and mechanical parts.

**FX - FV Jaws puller**



**FZ Cross Bearing pullers**



**HYDRAULIC PULLERS**

**UNIVERSAL HYDRAULIC PULLERS - FU** (Include hydraulic and mechanic part)

Capacity (Tn)	5	10	20	30	50
Model	FU0500	FU1000	FU2000	FU3000	FU5000
Hydraulic Part	JH00518/1	JH01204/1	JH02205/1	JH03005/1	JH06008/1
Mechanic Part	FU0500/M	FU1000/M	FU2000/M	FU3000/M	FU5000/M
Weight (kg)	20	35	80	145	315



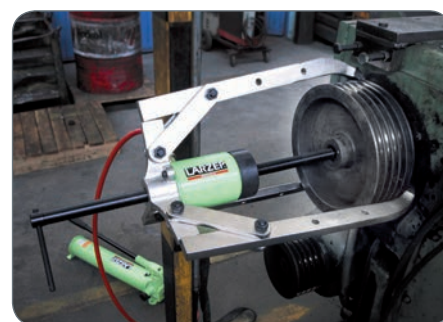
Type **FU - FV - FZ**

Capacity **5 - 50 Tn**

Max. pressure **700 bar**

**HYDRAULIC PART**

Capacity (Tn)	5	10	20	30	50
Model	JH00518/1	JH01204/1	JH02205/1	JH03005/1	JH06008/1
Cylinder	SM00518	SH01204	SH02205	SH03006	SH06008
Pump	W00307	W00307	W10707	W20707	W21207
Hose	AP2015	AP2015	AP2015	AP2015	AP2020
Gauge adaptor	AZ1502	AZ1502	AZ1502	AZ1502	AZ1502
Pressure gauge	AV10006	AV10006	AV10006	AV10006	AV10006
Male half coupling	AZ3120	AZ3120	AZ3120	AZ3120	AZ3120
Hollow saddle	-	AZ0551	AZ0552	AZ0553	AZ0556
Weight (kg)	7	8	16	21	34



**MECHANIC PART**

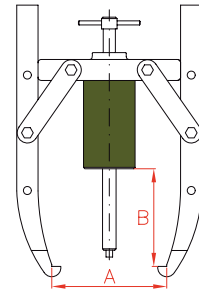
Capacity (Tn)	5	10	20	30	50	FV	FX	FZ	FT
Model	FU0500/M	FU1000/M	FU2000/M	FU3000/M	FU5000/M				
Jaw	FU0507	FU1007	FU2007	FU3007	FU5007	3	2	-	-
3 Jaws crosshead	-	-	FU2008	FU3008	FU5008	✓	-	-	-
2 Jaws crosshead	-	-	FU2009	FU3009	FU5009	✓	✓	-	-
2 and 3 Jaws crosshead	FU0508	FU1008	-	-	-	✓	✓	-	-
Arms	FU0510	FU1010	FU2010	FU3010	FU5010	6	4	-	-
Jaws bolts + Nuts	FU0511	FU1011	FU2011	FU3011	FU5011	6	4	-	-
Slinde + Handle	-	FU1012	FU2012	FU3012	FU5012	✓	✓	✓	✓
Short bolts (2)	-	14A0330	14A0074	14A0075	14A0076	✓	✓	-	-
Bearing puller	FR1000	FR1000	FR2000	FR3000	FR5000	-	-	✓	-
Gross crosshead	FU0517	FU1017	FU2017	FU3017	FU5017	-	-	✓	✓
Blank nuts (2)	FU1018	FU1018	FU2018	FU3018	FU5018	-	-	✓	✓
Washer (2)	FU1019	FU1019	FU2019	FU3019	FU5019	-	-	✓	✓
Slides (2)	FU0520	FU1020	FU2020	FU3020	FU5020	-	-	✓	✓
Fixing nuts (2)	FU0521	FU2021	FU2021	FU3021	FU5021	-	-	✓	✓
Large extenders (2)	FU0522	FU1022	FU2022	FU3022	FU5022	-	-	✓	✓
Short extenders (2)	FU0523	FU1023	FU2023	FU3023	FU5023	-	-	✓	✓
Bearing cup puller	-	FI1000	FI2000	FI3000	FI5000	-	-	✓	-
Point protector	FU0525	FU1025	FU2025	FU5025	FU5025	✓	✓	✓	✓
Connection nuts (2)	14B0050	14B0051	14B0029	14B0030	14B0031	-	-	✓	✓
Long bolts (2)	-	14A0331	14A0098	14A0099	14A0100	-	-	✓	✓
Weight (kg)	11	27	63	123	280				

✓ Included - Not available

**JAWS PULLER FX - FV**

(Include hydraulic and mechanic part)

Capacity	2 JAWS				3 JAWS			
	Model	A max.	B max.	Weight	Model	A max.	B max.	Weight
Tn	LARZEP	mm	mm	kg	LARZEP	mm	mm	kg
5	FV0500	240	225	7	FV0500	240	225	7
10	FV1000	350	320	9	FV1000	350	320	9
20	FX2000	480	340	18	FV2000	480	320	26
30	FX3000	580	390	30	FV3000	680	390	46
50	FX5000	920	727	66	FV5000	980	710	96

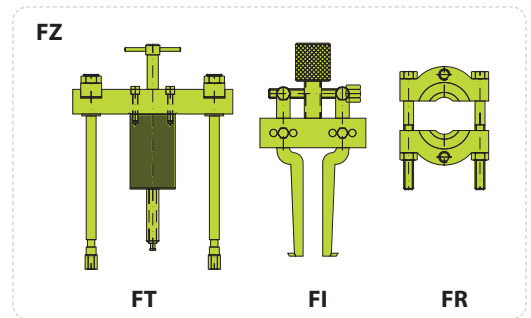


FX - FV

**FULL CROSS BEARING PULLER - FZ**

(Include hydraulic and mechanic part: FZ = FT + FI + FR)

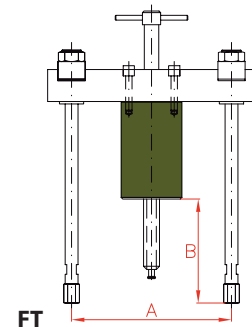
Capacity	Model	Simple Cross Bearing Puller	Bearing Cup Puller	Bearing Puller
Tn	LARZEP	FT	FI	FR
5	FZ0500	FT0500	-	FR1000
10	FZ1000	FT1000	FI1000	FR1000
20	FZ2000	FT2000	FI2000	FR2000
30	FZ3000	FT3000	FI3000	FR3000
50	FZ5000	FT5000	FI5000	FR5000



**SIMPLE CROSS BEARING PULLER - FT**

(Include hydraulic and mechanic part)

Capacity	Model	A min.	A max.	B max.	Weight
Tn	LARZEP	mm	mm	mm	kg
5	FT0500	40	185	170	7
10	FT1000	115	260	300	8
20	FT2000	170	345	265	19
30	FT3000	185	425	284	37
50	FT5000	220	580	447	71

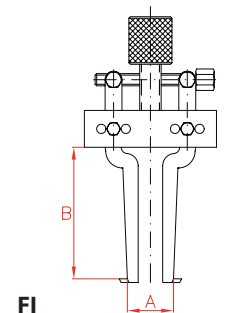


FT

**BEARING CUP PULLER - FI**

(Only mechanic part)

Capacity	Model	A min.	A max.	B	Weight
Tn	LARZEP	mm	mm	mm	kg
10	FI1000	40	145	115	2,2
20	FI2000	40	145	115	2,4
30	FI3000	60	240	150	6,0
50	FI5000	60	240	150	6,4

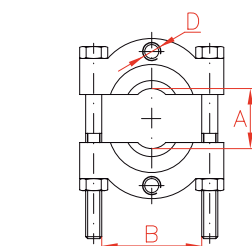


FI

**BEARING PULLER - FR**

(Only mechanic part)

Capacity	Model	A min.	A max.	B	D
Tn	LARZEP	mm	mm	mm	UN
5 - 10	FR1000	10	110	130	5/8" UNF-18
20	FR2000	12	134	155	5/8" UNF-18
30	FR3000	17	250	260	1" UNF-14
50	FR5000	35	300	300	1 1/4" UNF-12



FR



SELF-CENTERING PULLERS

SELF-CENTERING PULLERS



Type **FA**

Capacity **10 - 50 Tn**

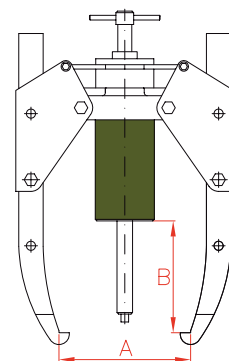
Max. pressure **700 bar**

- ✓ Self-Centering Puller available in 10, 20, 30 and 50 Tn versions.
- ✓ Ergonomic, self-centering of the jaws provides easy and safe setups on pulling jobs.
- ✓ FA Self-Centering Pullers include the hydraulic components and mechanical components.
- ✓ The large jaw opening allows bigger diameter reach and spread which makes the puller more versatile.

Model	A	B max.	Weight
LARZEP	mm	mm	kg
FA1000	50-350	320	25
FA2000	70-480	340	49
FA3000	90-680	390	76
FA5000	120-1.080	750	177

Capacity (Tn)	10	20	30	50
Model	FA1000	FA2000	FA3000	FA5000
Hydraulic part*	JH01204/1	JH02205/1	JH03005/1	JH06008/1
Mechanic part	FA1000/M	FA2000/M	FA3000/M	FA5000/M

\*See page 127.



**WEDGE SPREADER**



**WEDGE SPREADER**

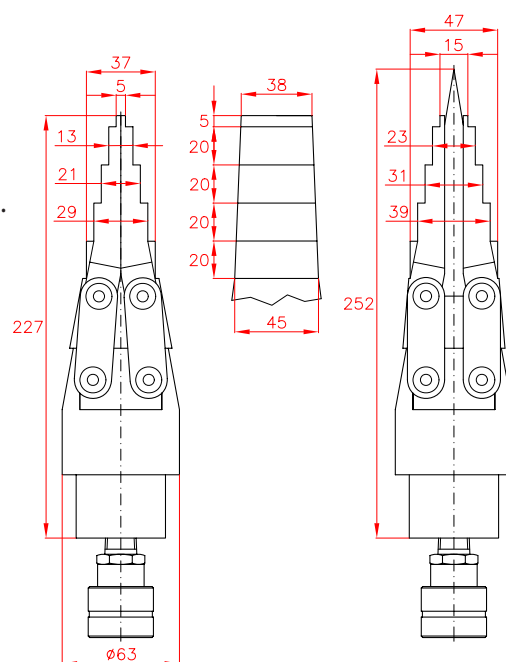
Type **CY**

Capacity **15 Tn**

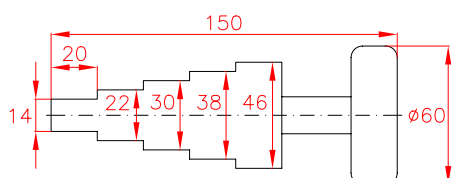
Max. pressure **700 bar**



- ✓ 15 Tn capacity wedge spreader.
- ✓ Lightweight and ergonomic tool. Easy and quick maintenance.
- ✓ Specially designed for pipe and flange repair and maintenance.  
Can be used also for seal replacement, removing elbows or heavy equipment maintenance.
- ✓ Required access gap of only 5 mm.
- ✓ Suitable for harsh offshore environment due to corrosion protection.
- ✓ Recommended to be used in pairs.
- ✓ Options: Aluminium Safety block CY15B; Handle CY15H; Kit CY1501S, with pump and 2 wedge spread



**Aluminium Safety Block CY15B as option.**



Capacity	Model	Oil Capacity	Access Gap	Max. open width	Weight
Tn	LARZEP	cm <sup>3</sup>	mm	mm	kg
15	CY1501	16	5	47	3,2



SPREAD CYLINDERS

SPREAD CYLINDERS

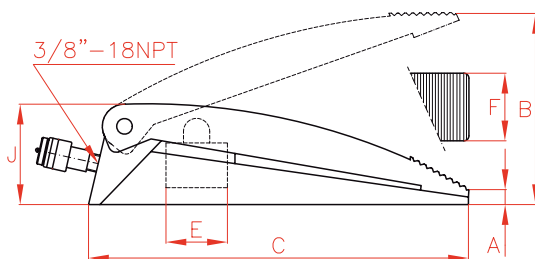


Type	<b>CY</b>
Capacity	<b>0,8 - 1 Tn</b>
Max. pressure	<b>700 bar</b>

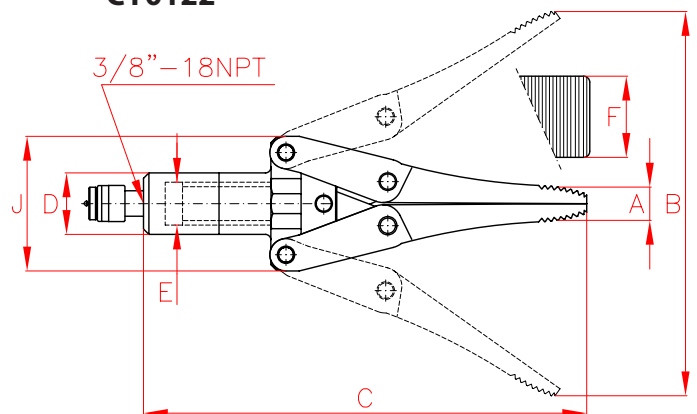


- ✓ CY series spreaders are used for many tasks in confined access situations.
- ✓ CY0109G is used for very confined situations and CY0122 is used for greater spreading distance.
- ✓ CY0109G and CY0122 models are supplied with AZ3140 high flow female couplers.
- ✓ Also available CY0109 and CY0122P fitted with AZ3240 low flow female coupler.

**CY0109G**



**CY0122**



Capacity		Stroke	Model	Oil Cap.	Area	A	B	C	D	E	F	J	Weight
Tn	kN	mm	LARZEP	cm <sup>3</sup>	cm <sup>2</sup>	mm	mm	mm	mm	mm	mm	mm	kg
1	10	75	<b>CY0109G</b>	10	7	15	90	168	-	29	55	55	2
0,8	8	189	<b>CY0122</b>	63	11,3	31	220	382	50	38	50	124	6

## DYNAMOMETERS & LOAD CELLS



- ✓ Accuracy  $\pm 4\%$  full scale.
- ✓ 5 to 100 Tn models available for dynamometers, and 5 to 150 Tn models for load cells.
- ✓ Includes glycerine filled gauges with maximum load indicating pointer.

### CT DYNAMOMETERS

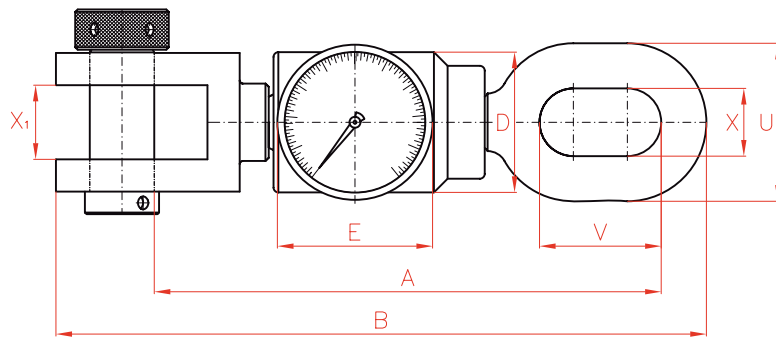
- ✓ Measure loads in compression.
- ✓ Can be used for measuring tension loads in cables, tensile testing and can be used as a weighing device.

### C LOAD CONTROL CELLS

- ✓ Portable compression load cells, measure loads in compression.
- ✓ All models have remote mounted gauge with 0,8 metre hose AP2008.

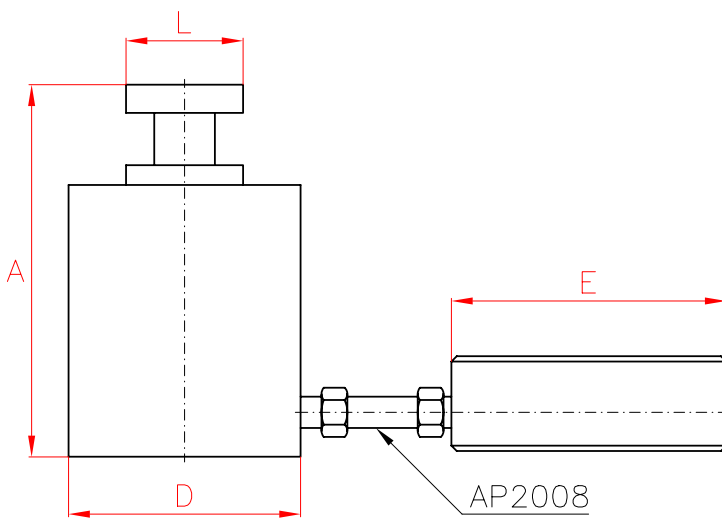


Type	<b>CT - C</b>
Capacity	<b>5 - 150 Tn</b>
Max. pressure	<b>700 bar</b>



**DYNAMOMETERS**

Capacity		Model	A	B	D	E	U	V	X	X1	Weight	Gauge	
Tn	kN	LARZEP	mm	mm	mm	mm	mm	mm	mm	mm	kg	Model	Scale (Tn)
5	49	CT00525	328	397	87	100	98	98	42	46	12,5	AX00510	0,05
10	98	CT01025	367	446	102	100	107	108	46	50	18,5	AX01010	0,1
30	303	CT03025	447	563	125	100	108	153	50	70	27,0	AX03010	0,3
50	486	CT05025	643	793	148	100	130	150	50	50	50,0	AX05010	0,5
100	1.026	CT10025	726	851	260	100	296	146	146	146	120,0	AX10010	1



Pressure gauge separated from the load cell with a 0,8 metre hose AP2008.



DDR200015 cylinder. 2.000 Tn capacity cylinder for electronic load cell for pile testing.

**LOAD CELLS**

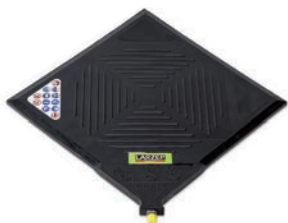
Capacity		Model	A	D	E	L	Weight	Gauge	
Tn	kN	LARZEP	mm	mm	mm	mm	kg	Model	Scale (Tn)
5	44	CX00510	39	60	100	25	1,9	AX00510	0,05
10	99	CX01010	54	83	100	38	2,3	AX01010	0,1
30	287	C03010	72	114	100	60	4,8	AX03010	0,3
50	486	C05010	84	140	100	61	7,3	AX05010	0,5
100	953	C10010	103	178	100	88	15,7	AX10010	1
150	1.449	C15010	116	216	100	111	25,7	AX15010	1,5



Larzep designs and manufactures special cylinders for electronic load cells for pile testing. For further information, please contact our Internal Sales department.



**LIFTING CUSHIONS**



Type

**AA**

Capacity

**6 - 65 Tn**

Max. pressure

**8 bar**

**LIFTING CUSHIONS**



- ✓ Used in rescue operations, rubble lifting in collapses and other lifting applications with very limited access. Excellent for lifting loads at restricted spaces.
- ✓ Pneumatic cushion made of friction resistant material.
- ✓ Closed height of 28 mm.
- ✓ Working pressure: 8 bar.
- ✓ 1/4" BSP male thread.
- ✓ Use two cushions to increase the lifting height.
- ✓ Hoses, couplers and control valves are available.

\* Maximum capacity when using the maximum effective lifting area.  
Lifting capacity decreases as the load is being lifted.

Model	Max. Capacity*	Stroke	Volume	Dimensions	Weight
LARZEP	Tn	mm	l	mm	kg
AA00617	6	175	4,5	300x300x28	2,5
AA01423	14	235	11,7	420x420x28	6
AA01928	19	280	23,4	510x510x28	8
AA03034	30	345	41,4	620x620x28	12
AA04341	43	410	72,0	750x750x28	17
AA06550	65	500	139,5	920x920x28	23

Model	Hose	
LARZEP	m	
AZN2020	2	
AZN2040	4	
AZN2100	10	
Model	Valve	Weight
LARZEP	Outlet No.	kg
AZN6100	1	1,1
AZN6501	2	2,2
Model	Coupler	
LARZEP	1/4" BSP	
AZN3021	Male	
AZN3041	Female	



HYDRAULIC TOE JACK

HYDRAULIC TOE JACK



Type **AU**

Capacity **20 - 60 Tn**

Max. pressure **700 bar**



- ✓ Compact and lightweight jacks for easy transportation.
- ✓ Load can be lifted with either toe or main plunger.
- ✓ Fitted with relief valve to prevent overloading.
- ✓ Excellent for lifting loads in limited access situations.
- ✓ Pumping handle included.

Capacity	Model	Toe Capacity	Stroke	Length	Width	Toe Height	Closed Height	Weight
Tn	LARZEP	Tn	mm	mm	mm	mm	mm	kg
20	AU02015	8	152	246	121	67	280	15
	AU02030	8	305	246	121	67	456	23
30	AU03015	12	152	273	140	73	281	21
	AU03030	12	305	273	140	73	472	32
60	AU06015	24	152	342	190	73	327	44
	AU06030	24	305	342	190	73	540	65

**FLANGE SPREADER**



**FLANGE SPREADER**

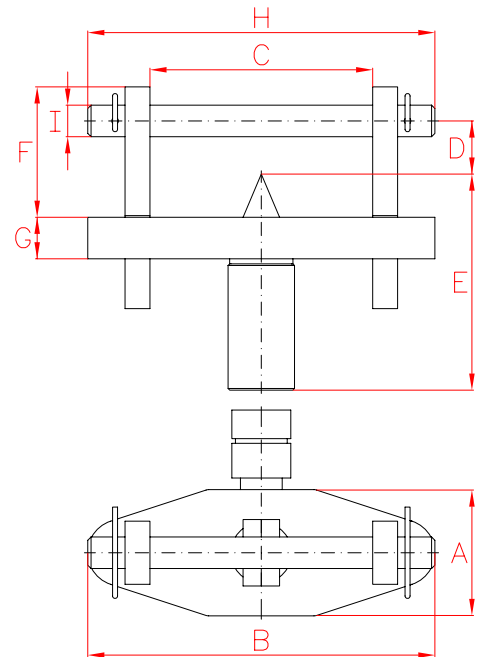


Type **BS**

Capacity **5 - 10 Tn**

Max. pressure **700 bar**

- ✓ 5 and 10 Tn models available.
- ✓ Used for safely opening pipe flanges.
- ✓ Adjustable jaw width from 70 to 226 mm.
- ✓ Ergonomic and lightweight tools.
- ✓ Can be operated individually or in pairs when the diameter of the flange is too big.



Capacity	Stroke	Module	Oil. Cap	Max. Flange thickness	A	B	C (mm)		D	E	F	G	H	I	Weight
Tn	mm	LARZEP	cm <sup>3</sup>	mm	mm	mm	min	max	mm	mm	mm	mm	mm	mm	kg
5	25	<b>BS00502</b>	18	2 x 57	76	209	70	155	32	130	79	25	209	19	4,2
10	55	<b>BS01005</b>	78	2 x 92	126	300	110	226	57	148	115	38	291	30	13,5



HYDRAULIC TORQUE WRENCHES

HYDRAULIC TORQUE WRENCHES



Type	<b>LS - LX</b>
Torque	<b>198 - 47.450 Nm</b>
Max. pressure	<b>690 bar</b>

- ✓ Square drive and low profile hexagon torque wrenches.
- ✓ Robust design to tighten and loosen nuts.
- ✓ Torque accuracy:  $\pm 3\%$  across full stroke.
- ✓ Wide range of accessories available.
- ✓ Torque wrench pumps HAT available.

 Always read the safety instructions.

Choose the most suitable model for the application from the wide range available and ensure that it will **not exceed 80%** of its nominal capacity during normal operation.

Remember that when loosening bolts or nuts a torque value higher than tightening torque is required. Depending on conditions, the loosening torque can reach 2,5 x the tightening torque.



**HAT**  
Torque Wrench Pump.



P.103

**AZ3**  
Coupler included.



P.108

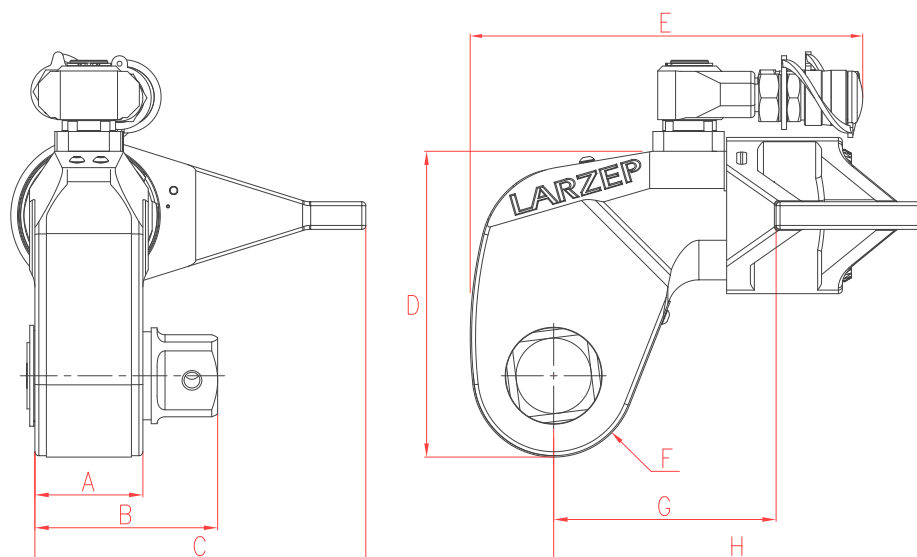
**SQUARE DRIVE HYDRAULIC TORQUE WRENCHES**



- ✓ Designed to tighten and loosen nuts requiring accurate high torque during bolt tightening and maximum torque during bolt loosening.
- ✓ Compact body construction, provides high strength and small operating radius.
- ✓ 35° rotation angle and rapid return stroke.
- ✓ Adjustable 360° reaction arm with quick release lever.
- ✓ Easy positioning that provides the maximum torque at any angle.
- ✓ Torque accuracy: ±3% across full stroke.
- ✓ All models include LSQ square drive, with push button release for quickly reversing for tightening and loosening applications.

Torque (Nm)		Model	Square Drive	A	B	C	D	E	F	G	H	Weight
Min.	Max.	LARZEP	"	mm	mm	mm	mm	mm	mm	mm	mm	kg
198	1.898	<b>LS02</b>	3/4"	39	65	108	97	136	25	70	129	2,7
433	4.339	<b>LS04</b>	1"	48	78	135	128	173	33	90	161	5,0
835	8.144	<b>LS08</b>	1 1/2"	55	92	169	157	192	40	110	188	8,5
1.491	14.914	<b>LS15</b>	1 1/2"	72	114	197	190	228	50	133	229	15,0
3.407	34.079	<b>LS34</b>	2 1/2"	89	143	246	244	287	64	182	295	31,0





Type **LS**

Torque **198 - 34.079 Nm**

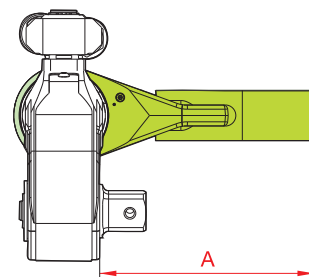
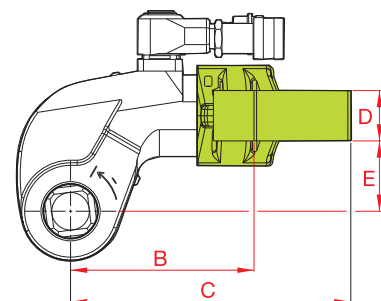
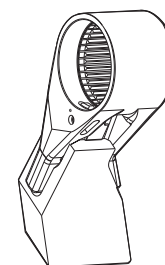
Max. pressure **690 bar**



Available wide range of heavy-duty impact sockets.  
Wide range of accessories available: Reaction Tube Extensions and Extended Reaction Arms.  
Optional Allen hexagonal Drives and Short Reaction Arms for use with allen drives.  
Several models of HAT torque wrench pumps available.

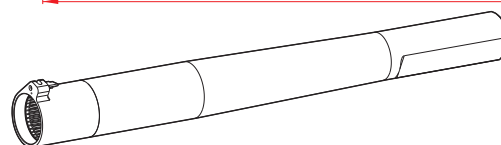
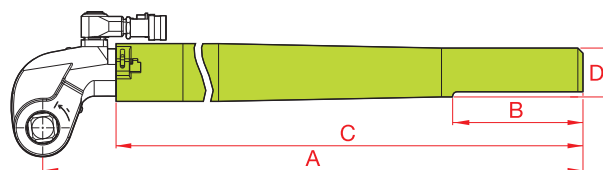
**Extended Reaction Arms**

Wrench	Max. Torque	Model	A	B	C	D	E	Weight
Model	Nm	LARZEP	mm	mm	mm	mm	mm	kg
LS02	1.800	LS02LA1	94	86	127	24	34	0,8
	1.640	LS02LA2	119	97	138	24	34	1,0
	1.530	LS02LA3	145	109	148	24	34	1,2
LS04	3.915	LS04LA1	111	106	168	34	48	1,6
	3.710	LS04LA2	137	117	182	34	48	2,0
	3.570	LS04LA3	162	132	198	34	48	2,5
LS08	7.840	LS08LA1	138	128	192	39	62	2,3
	7.450	LS08LA2	163	144	207	39	62	2,7
	7.175	LS08LA3	189	159	222	39	62	3,4
LS15	14.650	LS15LA1	149	157	232	46	76	4,4
	13.955	LS15LA2	175	172	247	46	76	5,1
	13.390	LS15LA3	200	187	261	46	76	5,8
LS34	33.535	LS34LA1	183	209	295	50	100	7,6
	32.045	LS34LA2	208	222	310	50	100	8,4
	30.750	LS34LA3	233	236	326	50	100	10,0



**Reaction Tube Extension**

Wrench	Model	A	B	C	D	Weight
Model	LARZEP	mm	mm	mm	mm	kg
LS02	LS02RT	706	152	636	58	4,6
LS04	LS04RT	733	152	647	57	5,5
LS08	LS08RT	747	152	659	65	7,7
LS15	LS15RT	769	152	675	76	11,2
LS34	LS34RT	813	152	685	100	17,3



**HEAVY DUTY IMPACT SOCKETS**


Type

**LSS**

Nut

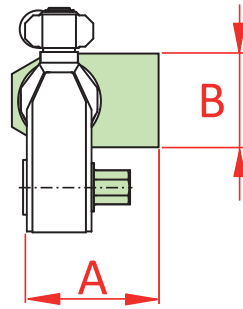
**M14 - M125**

 Hexagon size **22 -180 mm (A/F)**
**HEAVY DUTY IMPACT SOCKETS**


Socket		Square Drive			
Hexagon	Thread	Model	Model	Model	Model
mm (A/F)	∅	3/4"	1"	1 1/2"	2 1/2"
22	M14	LSS07022	-	-	-
24	M16	LSS07024	-	-	-
27	M18	LSS07027	LSS10027	-	-
30	M20	LSS07030	LSS10030	-	-
32	M22	LSS07032	LSS10032	LSS15032	-
36	M24	LSS07036	LSS10036	LSS15036	-
41	M27	LSS07041	LSS10041	LSS15041	-
46	M30	LSS07046	LSS10046	LSS15046	-
50	M33	LSS07050	LSS10050	LSS15050	-
55	M36	LSS07055	LSS10055	LSS15055	LSS25055
60	M39	-	LSS10060	LSS15060	LSS25060
65	M42	-	LSS10065	LSS15065	LSS25065
70	M45	-	LSS10070	LSS15070	LSS25070
75	M48	-	LSS10075	LSS15075	LSS25075
80	M52	-	LSS10080	LSS15080	LSS25080
85	M56	-	LSS10085	LSS15085	LSS25085
90	M60	-	LSS10090	LSS15090	LSS25090
95	M64	-	LSS10095	LSS15095	LSS25095
100	M68	-	-	LSS15100	LSS25100
105	M72	-	-	LSS15105	LSS25105
110	M76	-	-	LSS15110	LSS25110
115	M80	-	-	LSS15115	LSS25115
120	M85	-	-	LSS15120	LSS25120
130	M90	-	-	LSS15130	LSS25130
135	M95	-	-	LSS15135	LSS25135
145	M100	-	-	LSS15145	LSS25145
150	M105	-	-	LSS15150	LSS25150
155	M110	-	-	-	LSS25155
165	M115	-	-	-	LSS25165
175	M120	-	-	-	LSS25175
180	M125	-	-	-	LSS25180



ALLEN KEY DRIVES & SHORT REACTION ARMS



Type **LSA**

Hexagon size **14 - 85 mm (A/F)**

Max. Torque **644 - 34.079 Nm**

Torque Wrench	Allen Drives				Short Reaction Arm		
Model	Model	Hexagon	Max. Torque	Length	Model	A	B
LARZEP	LARZEP	mm	Nm	mm	LARZEP	mm	mm
LS02	LSA0214	14	644	66	LS02SA	67,5	74
	LSA0217	17	1.150	68			
	LSA0219	19	1.605	70			
	LSA0222	22	1.897	73			
	LSA0224	24	1.897	74			
LS04	LSA0417	17	1.150	77	LS04SA	80,0	74
	LSA0419	19	1.605	79			
	LSA0422	22	2.485	82			
	LSA0424	24	3.230	84			
	LSA0427	27	4.336	85			
	LSA0430	30	4.336	87			
	LSA0432	32	4.336	88			
LS08	LSA0817	17	1.150	86	LS08SA	91,5	89
	LSA0819	19	1.605	88			
	LSA0822	22	2.485	91			
	LSA0824	24	3.230	93			
	LSA0827	27	4.600	94			
	LSA0830	30	6.308	96			
	LSA0832	32	7.656	97			
LS15	LSA1530	30	6.308	112	LS15SA	127,5	106
	LSA1532	32	7.656	114			
	LSA1536	36	10.894	117			
	LSA1541	41	14.905	121			
	LSA1546	46	14.905	127			
LS34	LSA3436	36	10.894	140	LS34SA	158,5	135
	LSA3441	41	16.098	144			
	LSA3446	46	22.730	148			
	LSA3450	50	29.194	151			
	LSA3455	55	34.079	154			
	LSA3460	60	34.079	158			
	LSA3465	65	34.079	161			
	LSA3470	70	34.079	164			
	LSA3475	75	34.079	168			
	LSA3485	85	34.079	175			

LSS - LSA TOOLS



**LOW PROFILE HYDRAULIC HEXAGON TORQUE WRENCHES**



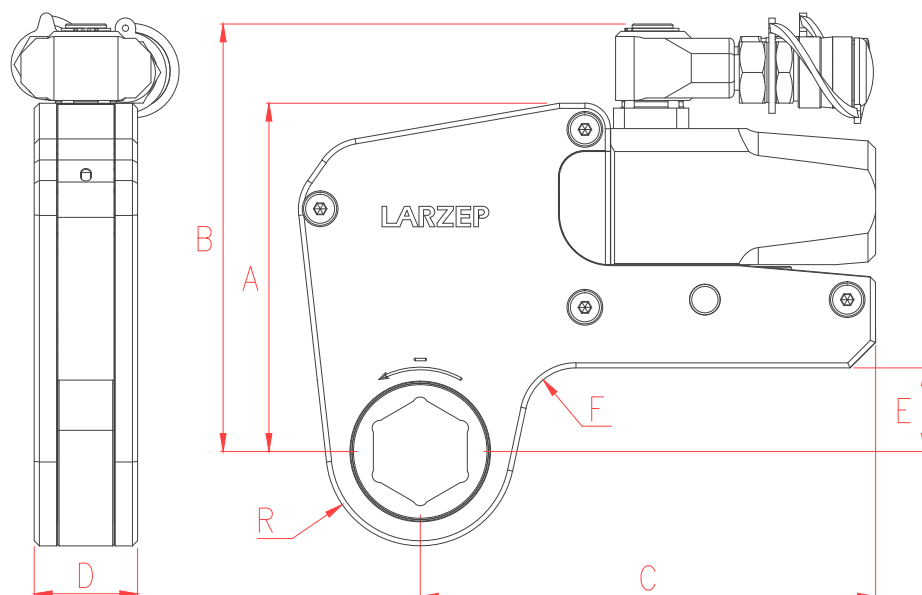
- ✓ Designed to tighten and loosen directly nuts requiring accurate high torque during bolt tightening and maximum torque during bolt loosening.
- ✓ Low profile design and small operating radius.
- ✓ Robust and easy to disassemble for maintenance without special tools.
- ✓ Fast release drive unit for quick exchange of cassette.
- ✓ 30° rotation angle and rapid return stroke.
- ✓ Torque accuracy:  $\pm 3\%$  across full stroke.
- ✓ Wide range of interchangeable cassettes, from 30mm to 155mm hexagon.
- ✓ Wide range of hexagonal reducer inserts to extend the range of nut size as option.
- ✓ Wide range of accessories available: Extended Reaction Arms and Reaction Paddles.
- ✓ Several models of HAT torque wrench pumps available.



**HAT**  
Torque Wrench Pump.



HEXAGONAL TORQUE WRENCHES



Type **LX**

Torque **2.712 - 47.450 Nm**

Max. pressure **690 bar**

Torque	Drive Unit		Cassette			Dimensions					
Maximum	Model	Weight	Model	Hexagon	Weight	A	B	C	D	E	F
Nm	LARZEP	kg	LARZEP	mm	kg	mm	mm	mm	mm	mm	mm
2.712	<b>LX03</b>	<b>1,4</b>	<b>LX03H_</b>	30 to 60	2,1-2,3	109	141	148	32	24	20
5.423	<b>LX06</b>	<b>2,0</b>	<b>LX06H_</b>	36 to 85	3,7-4,5	136	167	178	41	33	20
10.846	<b>LX11</b>	<b>3,0</b>	<b>LX11H_</b>	50 to 105	7,9-9,3	172	205	208	53	42	25
20.337	<b>LX21</b>	<b>5,0</b>	<b>LX21H_</b>	65 to 115	13,6-15,1	207	240	253	63	50	20
30.505	<b>LX31</b>	<b>7,7</b>	<b>LX31H_</b>	75 to 135	21,9-25,0	227	266	297	77	48	35
47.450	<b>LX47</b>	<b>11,4</b>	<b>LX47H_</b>	80 to 155	31,8-36,7	268	301	345	91	69-73	50

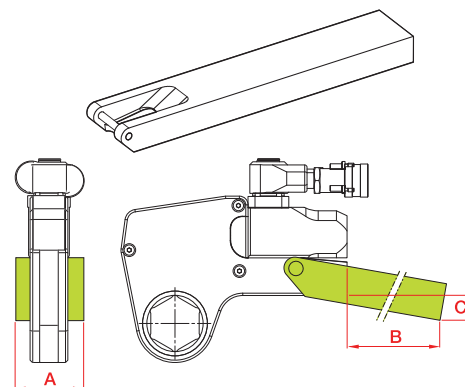


The wrenches consist of a drive unit (LX\_ \_) and an interchangeable hexagonal cassette (LX\_ \_H\_ \_).

**Example:** If you need a torque wrench for 50 mm hexagon with a maximum torque of 5.100 Nm, References to request are **LX06 + LX06H050**.

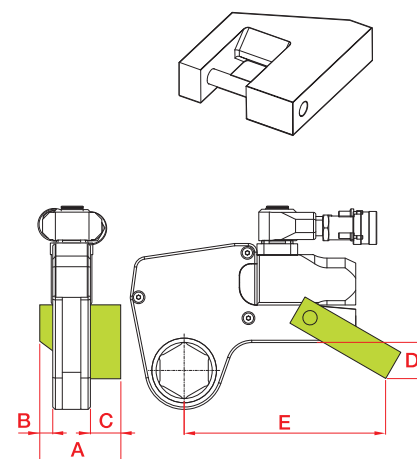
Extended Reaction Arms

Wrench	Model	A	B	C	Weight
Model	LARZEP	mm	mm	mm	kg
LX03	<b>LX03LA</b>	56	398	76	2,6
LX06	<b>LX06LA</b>	66	436	74	4,6
LX11	<b>LX11LA</b>	85	449	55	7,6
LX21	<b>LX21LA</b>	102	498	72	12,0
LX31	<b>LX31LA</b>	114	524	77	17,3
LX47	<b>LX47LA</b>	127	419	133	17,8



Reaction Paddles

Wrench	Model	A	B	C	D	E	Weight
Model	LARZEP	mm	mm	mm	mm	mm	kg
LX03	<b>LX03SA</b>	84	16	35	45	148	0,4
LX06	<b>LX06SA</b>	109	21	47	59	190	0,8
LX11	<b>LX11SA</b>	137	26	57	69	223	2,0
LX21	<b>LX21SA</b>	165	32	69	87	257	3,9
LX31	<b>LX31SA</b>	207	37	91	134	317	7,2
LX47	<b>LX47SA</b>	225	42	91	182	367	10,6



**HEXAGONAL REDUCER INSERTS**

**HEXAGONAL REDUCER INSERTS**

CASSETTES				HEXAGONAL REDUCER INSERTS					
Model	Thread	Hexagon	R	Model	Reducer	Model	Reducer	Model	Reducer
LX03		mm (A/F)	mm	LX03	mm (A/F)	LX03	mm (A/F)	LX03	mm (A/F)
LX03H030	M20	30	31	-	-	-	-	-	-
LX03H032	M22	32	31	-	-	-	-	-	-
LX03H036	M24	36	31	-	-	-	-	-	-
LX03H041	M27	41	34	LX03R041032	41 - 32	LX03R041030	41 - 30	LX03R041024	41 - 24
LX03H046	M30	46	34	LX03R046036	46 - 36	LX03R046032	46 - 32	-	-
LX03H050	M33	50	39	LX03R050041	50 - 41	LX03R050036	50 - 36	-	-
LX03H055	M36	55	42	LX03R055046	55 - 46	LX03R055041	55 - 41	LX03R055036	55 - 36
LX03H060	M39	60	45	LX03R060050	60 - 50	LX03R060046	60 - 46	LX03R060041	60 - 41
				LX03R060036	60 - 36	-	-	-	-

CASSETTES				HEXAGONAL REDUCER INSERTS					
Model	Thread	Hexagon	R	Model	Reducer	Model	Reducer	Model	Reducer
LX06		mm (A/F)	mm	LX06	mm (A/F)	LX06	mm (A/F)	LX06	mm (A/F)
LX06H036	M24	36	37	-	36 - 30	-	-	-	-
LX06H041	M27	41	37	-	41 - 32	-	-	-	-
LX06H046	M30	46	40	-	46 - 36	-	-	-	-
LX06H050	M33	50	42	LX06R050036	50 - 36	-	-	-	-
LX06H055	M36	55	44	LX06R055041	55 - 41	LX06R055036	55 - 36	LX06R055032	55 - 32
LX06H060	M39	60	47	LX06R060050	60 - 50	LX06R060046	60 - 46	LX06R060036	60 - 36
AX06H065	M42	65	50	LX06R065055	65 - 55	LX06R065050	65 - 50	LX06R065046	65 - 46
LX06H070	M45	70	53	LX06R070060	70 - 60	LX06R070055	70 - 65	-	-
LX06H075	M48	75	55	LX06R075065	75 - 65	LX06R075060	75 - 60	LX06R075055	75 - 55
				LX06R075050	75 - 50	-	-	-	-
LX06H080	M52	80	59	LX06R080070	80 - 70	LX06R080065	80 - 65	LX06R080060	80 - 60
				LX06R080055	80 - 55	LX06R080050	80 - 50	-	-
LX06H085	M56	85	62						

CASSETTES				HEXAGONAL REDUCER INSERTS					
Model	Thread	Hexagon	R	Model	Reducer	Model	Reducer	Model	Reducer
LX11		mm (A/F)	mm	LX11	mm (A/F)	LX11	mm (A/F)	LX11	mm (A/F)
LX11H050	M33	50	45	-	-	-	-	-	-
LX11H055	M36	55	48	-	-	-	-	-	-
LX11H060	M39	60	51	-	-	-	-	-	-
LX11H065	M42	65	56	LX11R065050	65 - 50	-	-	-	-
LX11H070	M45	70	56	LX11R070055	70 - 55	-	-	-	-
LX11H075	M48	75	58	LX11R075060	75 - 60	LX11R075055	75 - 55	-	-
LX11H080	M52	80	61	LX11R080065	80 - 65	LX11R080060	80 - 60	LX11R080055	80 - 55
				LX11R080050	80 - 50	-	-	-	-
LX11H085	M56	85	66	LX11R085070	85 - 70	LX11R085065	85 - 65	LX11R085060	85 - 60
				LX11R085055	85 - 55	-	-	-	-
LX11H090	M60	90	74	LX11R090075	90 - 75	-	-	-	-
LX11H095	M64	95	74	LX11R095080	95 - 80	LX11R095075	95 - 75	-	-
LX11H100	M68	100	80						
LX11H105	M72	105	80						



## HEXAGONAL REDUCER INSERTS



CASSETTES				HEXAGONAL REDUCER INSERTS					
Model	Thread	Hexagon	R	Model	Reducer	Model	Reducer	Model	Reducer
LX21		mm (A/F)	mm	LX21	mm (A/F)	LX21	mm (A/F)	LX21	mm (A/F)
LX21H070	M45	70	59	-	-	-	-	-	-
LX21H075	M48	75	62	-	-	-	-	-	-
LX21H080	M52	80	65	LX21R080065	80 - 65	-	-	-	-
LX21H085	M56	85	70	LX21R085070	85 - 70	-	-	-	-
LX21H090	M60	90	75	LX21R090075	90 - 75	-	-	-	-
LX21H095	M64	95	75	LX21R095080	95 - 80	LX21R095075	95 - 75	-	-
LX21H100	M68	100	81	-	-	-	-	-	-
LX21H105	M72	105	81	LX21R105090	105 - 90	-	-	-	-
LX21H110	M76	110	88	LX21R110095	110 - 95	-	-	-	-
LX21H115	M80	115	88	LX21R115100	115 - 100	-	-	-	-

CASSETTES				HEXAGONAL REDUCER INSERTS					
Model	Thread	Hexagon	R	Model	Reducer	Model	Reducer	Model	Reducer
LX31		mm (A/F)	mm	LX31	mm (A/F)	LX31	mm (A/F)	LX31	mm (A/F)
LX31H075	M48	75	67	-	-	-	-	-	-
LX31H080	M52	80	67	LX31R080060	80 - 60	LX31R080055	80 - 55	-	-
LX31H085	M56	85	73	LX31R085065	85 - 65	LX31R085060	85 - 60	-	-
LX31H090	M60	90	78	LX31R090070	90 - 70	LX31R090060	90 - 60	-	-
LX31H095	M64	95	78	LX31R095075	95 - 75	-	-	-	-
LX31H100	M68	100	85	-	-	-	-	-	-
LX31H105	M72	105	85	-	-	-	-	-	-
LX31H110	M76	110	90	-	-	-	-	-	-
LX31H115	M80	115	90	-	-	-	-	-	-
LX31H120	M85	120	95	-	-	-	-	-	-
LX31H130	M90	130	100	-	-	-	-	-	-
LX31H135	M95	135	100	LX31R135105	135 - 105	-	-	-	-

CASSETTES				HEXAGONAL REDUCER INSERTS					
Model	Thread	Hexagon	R	Model	Reducer	Model	Reducer	Model	Reducer
LX47		mm (A/F)	mm	LX47	mm (A/F)	LX47	mm (A/F)	LX47	mm (A/F)
LX47H080	M52	80	129	LX47R080050	80 - 50	-	-	-	-
LX47H085	M56	85	129	-	-	-	-	-	-
LX47H090	M60	90	135	LX47R090060	90 - 60	-	-	-	-
LX47H095	M64	95	135	-	-	-	-	-	-
LX47H100	M68	100	139	-	-	-	-	-	-
LX47H105	M72	105	139	-	-	-	-	-	-
LX47H110	M76	110	146	LX47R110085	110 - 85	-	-	-	-
LX47H115	M80	115	146	-	-	-	-	-	-
LX47H120	M85	120	153	LX47R120095	120 - 95	-	-	-	-
LX47H130	M90	130	160	LX47R130105	130 - 105	-	-	-	-
LX47H135	M95	135	160	LX47R135110	135 - 110	-	-	-	-
LX47H140	M95	140	163	LX47R140115	140 - 115	-	-	-	-
LX47H145	M100	145	163	LX47R145120	145 - 120	-	-	-	-
LX47H150	M105	150	169	-	-	-	-	-	-
LX47H155	M110	155	169	LX47R155130	155 - 130	-	-	-	-

**PORTABLE PUNCHING HEADS**


Type

**PH**

Capacity

**15 - 45 Tn**

Max. pressure

**700 bar**
**PORTABLE PUNCHING HEADS**


- ✓ Direct punching hydraulic machine designed for round, square or oblong punched holes in mild steel plate.
- ✓ Lightweight, easy transport and handling, especially in confined spaces.
- ✓ Provided with a male ball quick coupler AZ3321.
- ✓ Used in electric conducting towers, metallic structures, bridges, etc.
- ✓ For punches on all type of plates I-L-T. Depending on material, indicate if 14% or 8% inclination punchers are needed.
- ✓ Material thickness depends on its hardness and should not exceed hole diameter. Up to 12,7 mm thickness in mild steel.
- ✓ Material maximum strength: 37 kg/mm<sup>2</sup>.
- ✓ Puncher and dies are not included in the tool. Order them indicating required diameter.

Capacity	Model	Punching ø min - max	Maximum Thickness	Distance to edge	Dimensions	Weight
Tn	LARZEP	mm	mm	mm	mm	kg
<b>15</b>	<b>PH015</b>	6 - 18	7	40	80 x 170 x 280	8,5
<b>35</b>	<b>PH035</b>	6,4 - 20,6	12,7	70	120 x 250 x 360	15,0
<b>45</b>	<b>PH045</b>	8 - 24	16	110	150 x 360 x 450	40,0



Always read the safety instructions.

HYDRAULIC CRIMPING TOOLS

HYDRAULIC CRIMPING TOOLS



Type **CB - CH - CM**

Capacity **5 - 100 Tn**

Max. pressure **700 bar**



- ✓ Models up to 20 Tn: Hydraulic compression tools for low voltage terminals and sleeves.
- ✓ Models from 50 to 100 Tn: Hydraulic compression tools for medium and high voltage aluminium and steel terminals and sleeves.
- ✓ Three types of hydraulic crimping tools are available: self contained (CM), battery powered (CB) or crimping head only (CH).
- ✓ With audible safety valve to limit the crimping force. Models up to 20 Tn.
- ✓ Maximum working pressure 700 bar, except CB005 model: 450 bar.
- ✓ Dies are interchangeable between models of the same capacity. Dies are not included in the tool. Order them indicating the required section and material.
- ✓ Box included for easy transport and tool protection.



Self Contained CM



Crimping Head CH



Battery Powered CB

## CRIMPING HEADS

- ✓ CH, hydraulic compression head, with AZ3321 quick coupler to connect to a hydraulic pump with a maximum working pressure of 700 bar.
- ✓ Models from 5 to 100 Tn.
- ✓ CH050D and CH100D are double acting models.
- ✓ Applications for 50 and 100 Tn models:  
Compression clamps and sleeves for:  
Aluminium conductors steel reinforced (ACSR),  
Aluminium conductors (AAC),  
Aluminium alloy conductors (AAAC),  
Aluminium conductors alloy reinforced (ACAR).

Capacity		Model	Oil Cap.	Stroke	ø max. connector	Dimensions	Weight
Tn	kN	LARZEP	cm <sup>3</sup>	mm	mm	mm	kg
5	55	CH005	50	15	25	185 x 75	1,5
12	120	CH012	50	25	35	240 x 85	2,7
		CH012C	50	25	35	225 x 130	3,2
20	200	CH020	50	45	58	345 x 140	8,5
50	500	CH050	303	38	60	350 x ø140	17,0
		CH050D	303	38	60	350 x ø140	17,0
100	1.000	CH100	314	22	75	365 x ø190	40,0
		CH100D	314	22	75	365 x ø190	40,0



## SELF-CONTAINED CRIMPING TOOLS

- ✓ CM, hydraulic compression tool with integral pump.
- ✓ Models from 5 to 20 Tn.
- ✓ With 180° rotating head.
- ✓ CM005 model lightweight and compact. Ideal for use in confined spaces.
- ✓ CM012 model, suitable for deep indenting underground lines (16 - 240 mm<sup>2</sup>), as well as other general compression applications. Adaptors available.
- ✓ Two-stage CM012C model, a fast speed for terminal fixing and a slow one for the crimping action.

Capacity		Model	Stroke	ø max. connector	Dimensions	Weight
Tn	kN	LARZEP	mm	mm	mm	kg
5	55	CM005	15	25	350 x 120	2,4
12	120	CM012	25	35	480 x 160	4,3
		CM012C	25	35	470 x 160	5,5





Type **CB - CH - CM**

Capacity **5 - 100 Tn**

Max. pressure **700 bar**

### BATTERY POWERED CRIMPING TOOLS

- ✓ CB, electro hydraulic portable tool with rechargeable battery and quick retract mechanism.
- ✓ Models from 5 to 20 Tn.
- ✓ With 180° rotating head.
- ✓ Two-stage CB012 model, suitable for deep indenting underground lines (16 - 240 mm<sup>2</sup>), as well as other general compression applications. Adaptors available.
- ✓ Supplied with 2 batteries 18V - 4 A·h, 1 charger and 1 safety belt.

Capacity		Model	Oil Cap.	Stroke	∅ max. connector	Dimensions	Weight
Tn	kN	LARZEP	cm <sup>3</sup>	mm	mm	mm	kg
5	55	CB005	100	16	25	315 x 230	3,4
12	120	CB012	100	25	35	350 x 280	6,4
		CB012C	100	25	35	380 x 280	6,6



Battery (Ref. CBB)				Charger (Ref. CBC)	
Voltage	Li-ion	Battery Life	Max. compression duration	Input	Output
18V	4 Ah	<b>91 compressions</b> (Cu 150mm <sup>2</sup> )	CB005: 6 sec. - CB012: 11 sec. CB012C: 10 sec.	100 - 240 VAC 50 - 60 Hz	18 VDC 4 Ah

### MAXIMUM SECTION FOR APPLICATIONS

Model	Sleeves and preinsulated terminals				Sleeves and terminals
	MJPT	MJB	CPTA	CPTAU	Standard Cu
LARZEP	mm <sup>2</sup> (mcm)	mm <sup>2</sup>	mm <sup>2</sup> (mcm)	mm <sup>2</sup> (mcm)	mm <sup>2</sup> (mcm)
CM005 - CH005	150 (350)	25 (#2)	150 (350)	150 (350)	240 (500)
CB005	150 (350)	25 (#2)	150 (350)	150 (350)	240 (500)
CB012, CH012, CM012	150 (350)	25 (#2)	150 (350)	150 (350)	400 (750)
CB012C, CH012C, CM012C	150 (350)	25 (#2)	150 (350)	150 (350)	400 (750)
CH020	150 (350)	25 (#2)	150 (350)	150 (350)	630 (1.250)

Model	Tubular Al	Tubular Cu	Connectors	Bimetallic terminal
		DIN 46235	'C' Type	Norm EDF HN-68-S-90
LARZEP	mm <sup>2</sup> (mcm)	mm <sup>2</sup> (mcm)	mm <sup>2</sup> (mcm)	mm <sup>2</sup> (mcm)
CM005 - CH005	150 (350)	185 (400)	50/50 (2/0-2/0)	-
CB005	150 (350)	185 (400)	50/50 (2/0-2/0)	-
CB012, CH012, CM012	300 (600)	185 (400)	185 (400)	240 (500)
CB012C, CH012C, CM012C	300 (600)	185 (400)	185 (400)	-
CH020	500 (1.000)	240 (500)	185 (400)	630 (1.250)