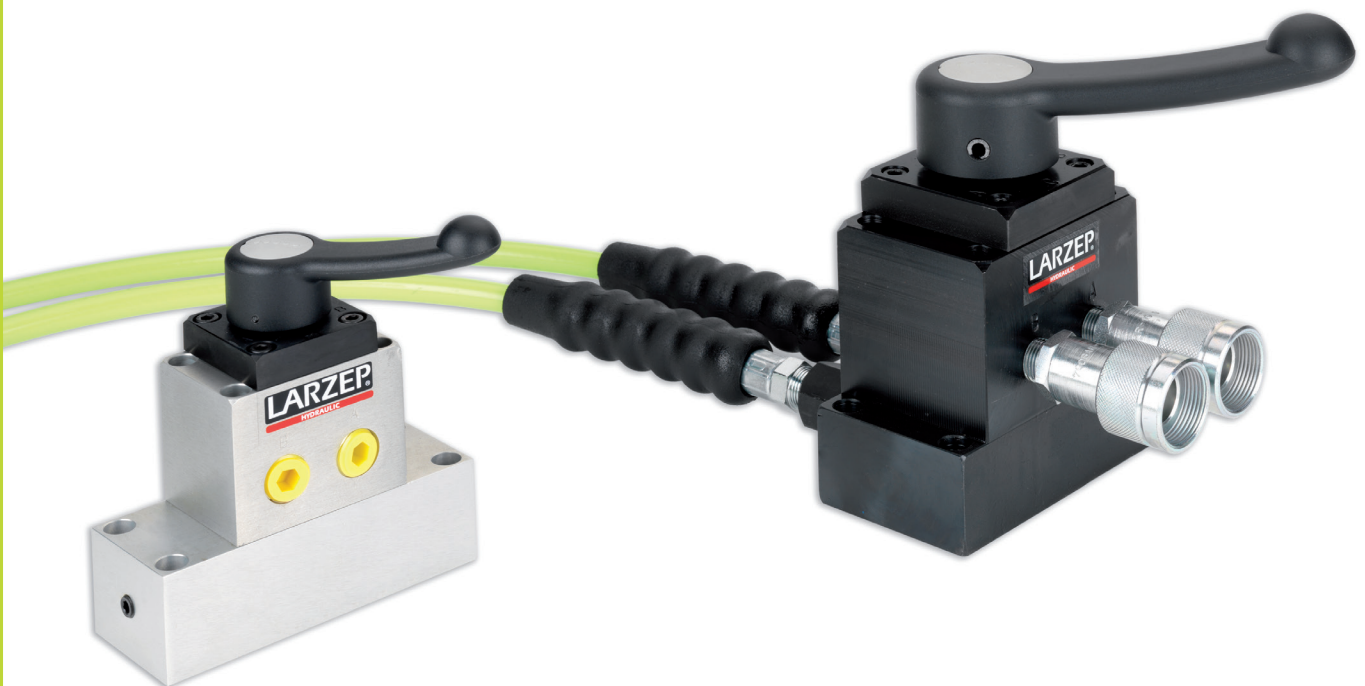


## ACCESSORIES









**LARZEP** offers a wide range of accessories to optimize our products performance: Hoses, Couplers, Tilting saddles, Hollow saddles, Flow control valves, Fittings and Manifolds, Pressure gauges and Directional control valves are available as standard.

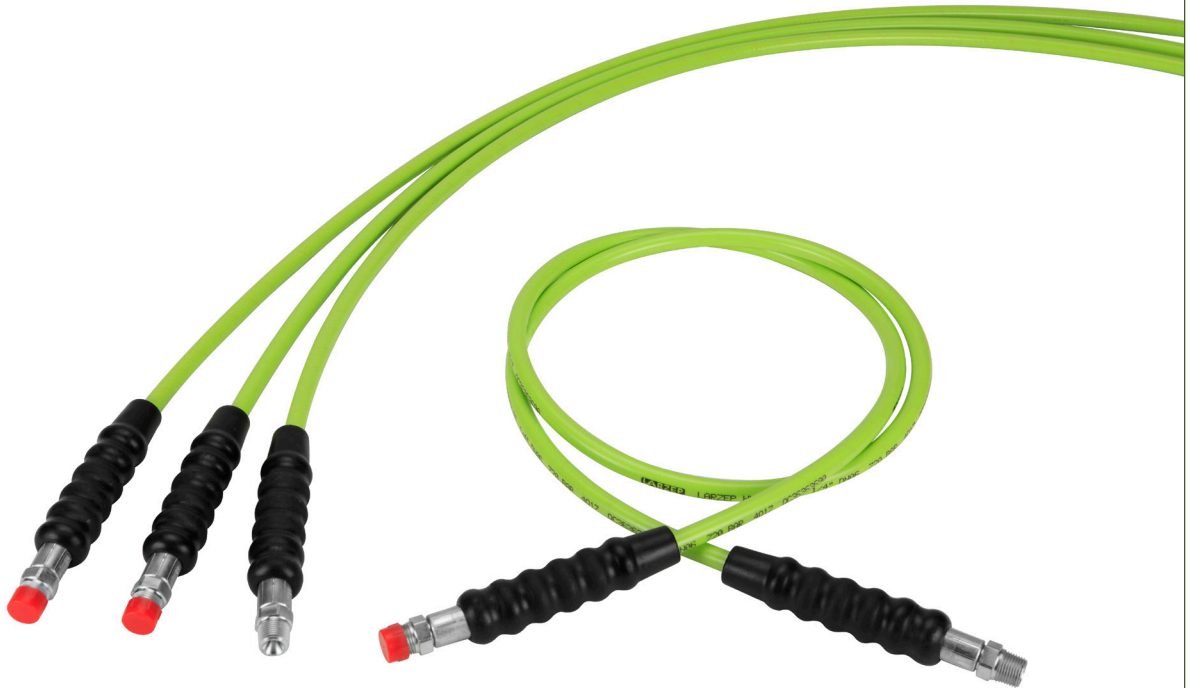
- ✓ Wide range of standard hoses up to 100 metres and 720 bar working pressure.  
Available hoses for 1.100 and 1.800 bar working pressure and Twin hoses for torque wrenches.
- ✓ Low flow and high flow quick couplers available as standard.  
Working pressure: 700 bar, 1.000 bar and 1.500 bar.
- ✓ Wide range of Flow control valves: Snubber valves, Flow regulating valves with 2 or 4 outlets, Manually operated check valve, Single way flow regulating valve, Check valve, Pressure relief valve and Pilot operated check valve.
- ✓ Tilting saddles highly recommended for side load application.  
Hollow saddles used in hollow piston cylinders specially in pulling and tensioning operations.
- ✓ Wide range of fittings and manifolds for multiple applications.
- ✓ Glycerine filled pressure gauges for monitoring working pressure and force.  
Available digital pressure gauges and pressure transducers.
- ✓ 3- or 4- ways directional control valves for single and double acting cylinders, suitable for remote operation.



# ACCESSORIES



Models	Accessories type		Page
AP - AR	Hydraulic Hoses		112
AZ89	Hydraulic Oil		113
AZ3	Hydraulic Couplers		114
AZ5	Flow Control Valves		116
AZ04 - AZ05	Saddles		118
AZ1	Fittings and Manifolds		120
AZ8 - AZ9	Directional Control Valves		122
AV-AVD AT-AY	Pressure Gauges		123

**HYDRAULIC HOSES**

- ✓ 4:1 Safety Factor.
- ✓ Wide range of standard hoses. Hoses can be supplied in any length on request.
- ✓ Rubber Guard on both ends.
- ✓ 3/8"-NPT thread on each end. Can be supplied with couplers on one or both ends.
- ✓ Internal Diameter 6,4mm; Oil Capacity: 35 cm<sup>3</sup> per metre.
- ✓ Internal Diameter 9,5mm; Oil Capacity: 75 cm<sup>3</sup> per metre.
- ✓ Twin hoses for torque wrenches available. AR model.
- ✓ 1.100, 1.800 and 2.800 bar working pressure hoses available.
- ✓ Minimum Bending radius: 80 mm.

**WARNING**

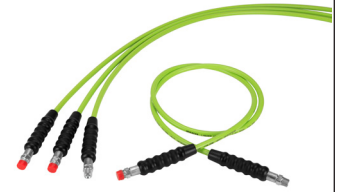
**Never disconnect the hose when the system is pressurized.  
Never exceed the maximum working pressure of the hose.**



Apply 2 rounds of Teflon around all 3/8" NPT threads of the system, in the thread direction, leaving the first thread uncovered to prevent the tape breaking and entering the hydraulic system. Torque: 80 Nm.



HYDRAULIC HOSES



Type **AP - AR**

Capacity **0,8 - 100 m length**

Max. pressure **700 - 1.800 bar**

**MAXIMUM WORKING PRESSURE 700 / 720 BAR**

Int. ø mm	End		Pressure bar	Length						
	1	2		0,8 m	1,5 m	2 m	3 m	4 m	6 m	10 m
6,4	3/8"-NPT	3/8"-NPT	720	AP2008	AP2015	AP2020	AP2030	AP2040	AP2060	AP2100
6,4	3/8"-NPT	AZ3120	720	AP2008G	AP2015G	AP2020G	AP2030G	AP2040G	AP2060G	AP2100G
6,4	AZ3120	AZ3120	720	AP2008G2	AP2015G2	AP2020G2	AP2030G2	AP2040G2	AP2060G2	AP2100G2
9,5	3/8"-NPT	3/8"-NPT	700	AP4008	AP4015	AP4020	AP4030	AP4040	AP4060	AP4100
9,5	3/8"-NPT	AZ3120	700	AP4008G	AP4015G	AP4020G	AP4030G	AP4040G	AP4060G	AP4100G
9,5	AZ3120	AZ3120	700	AP4008G2	AP4015G2	AP4020G2	AP4030G2	AP4040G2	AP4060G2	AP4100G2

**MAXIMUM WORKING PRESSURE : 700 BAR - TWIN HOSES AR, FOR TORQUE WRENCHES**

Int. ø mm	End		Pressure bar	Length							
	Hose 1	Hose 2		0,8 m	1,5 m	2 m	3 m	4 m	6 m	8 m	10 m
6,4	2 x 3/8"-NPT	2 x 3/8"-NPT	700	AR2008	AR2015	AR2020	AR2030	AR2040	AR2060	AR2080	AR2100

**MAXIMUM WORKING PRESSURE 1.100 BAR**

Int. ø mm	End		Pressure bar	Length							
	1	2		0,8 m	1,5 m	2 m	3 m	4 m	6 m	8 m	10 m
6,4	3/8"-NPT	3/8"-NPT	1.100	AP3008	AP3015	AP3020	AP3030	AP3040	AP3060	AP3080	AP3100

**MAXIMUM WORKING PRESSURE 1.800 BAR**

Int. ø mm	End		Pressure bar	Length							
	1*	2*		0,8 m	1,5 m	2 m	3 m	4 m	6 m	8 m	10 m
6,4	1/4"-BSP	1/4"-BSP	1.800	AP5008	AP5015	AP5020	AP5030	AP5040	AP5060	AP5080	AP5100

\*Cone 120°

**HYDRAULIC OIL**

Model	Capacity (l)	For use with
AZ8901	5	Hand Pumps, Bottle Jacks
AZ8902	5	Powerpacks



## HYDRAULIC COUPLERS



- ✓ Low flow and high flow couplers, from 6 to 40 litres/min.
- ✓ 700 and 1.000 bar couplers have 3/8"-18 NPT thread. 1.500 bar couplers have 1/4"-BSP thread.
- ✓ Male and Female couplers can be supplied separately.
- ✓ Steel dust cup available for AZ3120, AZ3140 and AZ3141 couplers.
- ✓ AZ3321, AZ3322, AZ3324, AZ3325, AZ3341, AZ3344 and AZ3345: ball quick couplers to guarantee easy and quick connection.
- ✓ AZ3120, AZ3140 and AZ3141: standard high flow couplers.
- ✓ AZ3220 and AZ3240: low flow couplers. Only used in Maintenance Sets.
- ✓ All standard cylinders are supplied with AZ3140 female coupler.
- ✓ All cutters are supplied with AZ3321 male ball coupler.



### WARNING

**Never disconnect the hose when the system is pressurized.  
Never exceed the maximum working pressure of the hose.**



Apply 2 rounds of Teflon around all 3/8" NPT threads of the system, in the thread direction, leaving the first thread uncovered to prevent the tape breaking and entering the hydraulic system. Torque: 80 Nm.



HYDRAULIC COUPLERS



Type **AZ3**

Capacity **6 - 40 l/min**

Max. pressure **700 - 1.500 bar**

Steel dust cup available:  
**AZ3144** for female couplers **AZ3140** and **AZ3141**  
**AZ3124** for male coupler **AZ3120**



Plastic dust cup **AZ3103** available  
 to suit **AZ3120**, **AZ3140** and **AZ3141** couplers

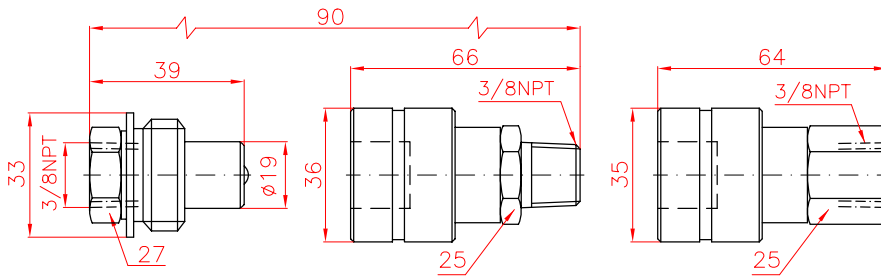


HIGH FLOW COUPLERS 700 BAR

**AZ3120**

**AZ3140**

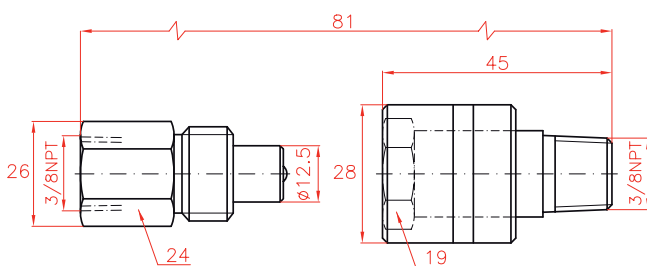
**AZ3141**



LOW FLOW COUPLERS 700 BAR

**AZ3220**

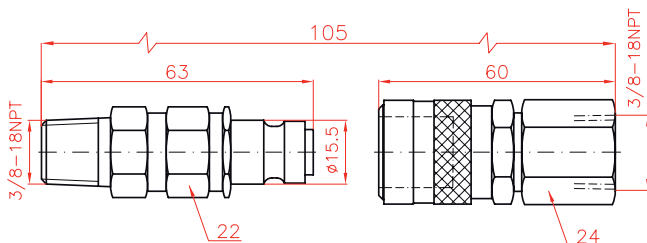
**AZ3240**



1.000 BAR BALL COUPLERS

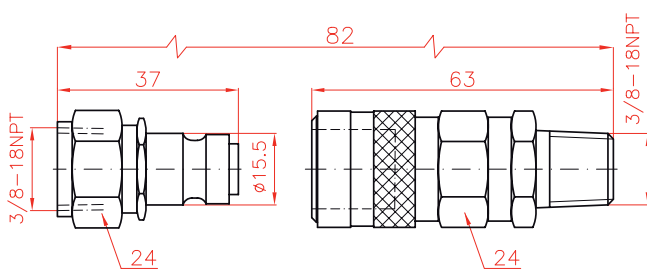
**AZ3321**

**AZ3341**



**AZ3325**

**AZ3345**

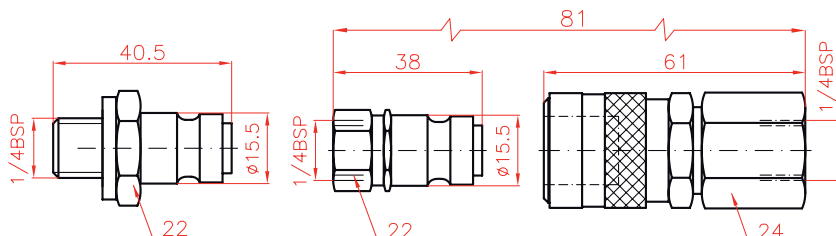


1.500 BAR BALL COUPLERS

**AZ3322**

**AZ3324**

**AZ3344**



Flow l/min	Coupling	Model LARZEP	Thread	Pressure bar
40	Male	<b>AZ3120</b>	Female 3/8"NPT	700
	Female	<b>AZ3140</b>	Male 3/8"NPT	700
	Female	<b>AZ3141</b>	Female 3/8"NPT	700
7	Male	<b>AZ3220</b>	Female 3/8"NPT	700
	Female	<b>AZ3240</b>	Male 3/8"NPT	700
6	Male	<b>AZ3321</b>	Male 3/8"NPT	1.000
	Male	<b>AZ3325</b>	Female 3/8"NPT	1.000
	Female	<b>AZ3341</b>	Female 3/8"NPT	1.000
	Female	<b>AZ3345</b>	Male 3/8"NPT	1.000
6	Male	<b>AZ3322</b>	Male 1/4"BSP*	1.500
	Male	<b>AZ3324</b>	Female 1/4"BSP*	1.500
	Female	<b>AZ3344</b>	Female 1/4"BSP*	1.500

\*Cone 120°

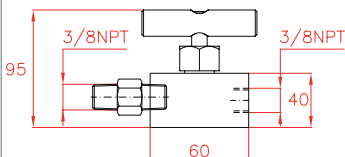
**AZ3321**, **AZ3322**, **AZ3324** and **AZ3325** male couplers  
 are connectable with  
**AZ3341**, **AZ3344** and **AZ3345** female couplers

Ref. AZ3322 without valve.

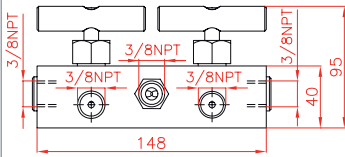
**FLOW CONTROL VALVES**



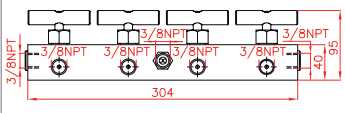
Model	SNUBBER VALVE	Symbol	
AZ5121	Used for flow control and load holding when closed. Also suitable for use as a gauge snubber.		



Model	MANIFOLD WITH FLOW REGULATING VALVE, 2 OUTLETS	Symbol	
AZ5122	Used for flow control of two outlets from one pressure source.		



Model	MANIFOLD WITH FLOW REGULATING VALVE, 4 OUTLETS	Symbol	
AZ5124	Used for flow control of four outlets from one pressure source.		



- ✓ All flow and pressure control valves are designed for 700 bar working pressure.
- ✓ All valves have 3/8"-NPT pressure ports to prevent leakage.



Type **AZ5**

Capacity -

Max. pressure **700 bar**

Model	MANUALLY OPERATED CHECK VALVE	Symbol	
AZ5200	<p>When open, allows oil flow in both directions.</p> <p>When closed, allows oil flow in one direction only, holding the load in the other one.</p>		

Model	SINGLE WAY FLOW REGULATING VALVE	Symbol	
AZ5255	<p>Similar to AZ5200, allows free oil flow in one direction and in the other, flow can be regulated or completely closed.</p>		

Model	CHECK VALVE	Symbol	
AZ5500	<p>Allows oil flow in one direction only.</p>		

Model	PRESSURE RELIEF VALVE	Symbol	
AZ5600	<p>Regulates the pressure in the hydraulic circuit. From 50 to 700 bar. Supplied with a 0.9 metre return line hose kit.</p>		

Model	PILOT OPERATED CHECK VALVE	Symbol	
AZ5700	<p>Load holding valve used with double-acting cylinders which is released by pilot pressure from the return line.</p>		

AZ5 ACCESSORIES



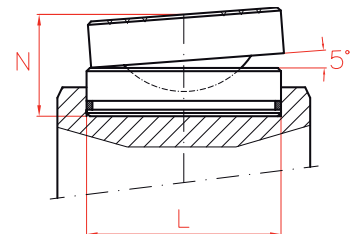
**SADDLES**



**TILTING SADDLES AZ04**

- ✓ Recommended for high side load applications.
- ✓ These saddles allow up to 5° tilt angle.
- ✓ Push-in or threaded to suit different cylinder models.

**AZ04 TILTING SADDLES**



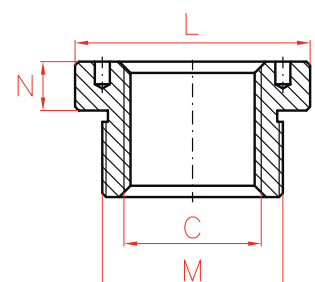
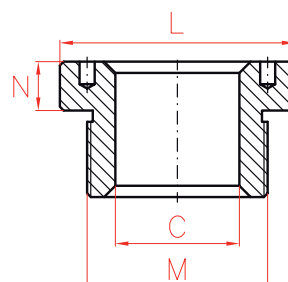
**HOLLOW SADDLES AZ05**

- ✓ Used in hollow piston cylinders.
- ✓ Especially used in pulling operations and as support.
- ✓ These saddles can be plain, threaded or solid.

**AZ05 HOLLOW SADDLES**

Standard Plain

Optional Internal Thread



SADDLES



Type **AZ04 - AZ05**

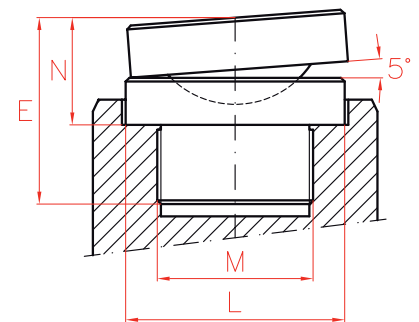
Capacity -

Max. pressure **700 bar**

**THREADED TILTING SADDLES**

Model	L	M	N	E	Weight	Cylinder Model
LARZEP	mm		mm	mm	kg	
AZ0420	28	1"-8	29	43	0,2	SM010-D010
AZ0423	35	1"-8	29	49	0,3	SM015-D020
AZ0421	45	1 1/2"-16	28	50	0,4	SM023-SM030-D030
AZ0422	61	1 3/4"-12	38	58	0,7	D050-D075-D100
AZ0424	88	2 1/2"-12	47	82	2,5	D150
AZ0425	111	2 1/2"-12	52	107	4,5	D200
AZ0431	34	M28x1,5	29	44	0,3	SH012
AZ0432	48	1 9/16"-16	29	46	0,5	SH022
AZ0433	55	1 13/16"-16	37	57	0,6	SH030-SAH030-DH030-DAH030
AZ0434	80	2 3/4"-16	47	67	2,3	SH060-SAH060-DH060-DAH060
AZ0435	116	2 1/2"-12	52	76	5,5	SH100-SAH100-DH100-DAH100

**AZ04 THREADED TILTING SADDLES**



**TILTING SADDLES**

Model	L	N	Weight	Cylinder Model
LARZEP	mm	mm	kg	
AZ0401	45	36	0,4	SAM023-SAM030-SP030-SMP030-STR030-SAT030-SATM030
AZ0402	61	39	0,8	SM050-SM075-SAM050-SP050-SMP050-SX050-SX075-STR050-SAT050-SATM050-DDA050-DDA075-DDR050
AZ0404	88	47	2,2	SM100-SM140-SAM100-SAM140-SP100-SMP100-SPR140-SX100-SX150-STR100-STR140 SAT100-SAT140-SATM100-SATM140-SSR140-DDA100-DDA140-DDR100-DDR140
AZ0405	111	52	4,0	SM220-SAM200-SPR220-STR220-SAT200-SATM200-SSR220-DDA200-DDR220
AZ0408	178	67	13,0	SPR350-SPR430-STR350-STR430-SSR350-SSR430-DDR350-DDR430
AZ0411	200	79	19,3	SPR560-SPR670-STR560-STR670-SSR560-SSR670-DDR560-DDR670
AZ0413	250	105	40,0	SPR880-STR880-SSR880-DDR880
AZ0415	325	175	113,0	SPR1100-STR1100-SSR1100-DDR1100

**HOLLOW SADDLES**

Standard Plain					Cylinder Model	Optional Threaded				
Model	C	L	M	N		Model	C	L	M	N
LARZEP	mm	mm		mm		LARZEP		mm		mm
AZ0531	19,5	34	M28x1,5	7	SH012	AZ0551	3/4"-16	34	M28x1,5	7
AZ0532	27,0	48	1 9/16"-16	8	SH022-SAH022	AZ0552	1"-8	48	1 9/16"-16	8
AZ0533	33,4	55	1 13/16"-16	9	SH030-SAH030-DH030-DAH030	AZ0553	1 1/4"-7	55	1 13/16"-16	9
AZ0536	56,0	80	2 3/4"-16	12	SH060-SAH060-DH060-DAH060	AZ0556	1 5/8"-5 1/2	80	2 3/4"-16	12
AZ0540	81,0	116	4"-16	13	SH100-SAH100-DH100-DAH100	AZ0560	2 1/2"-8	116	4"-16	13
AZ0545	81,0	135	4 1/4"-16	20	DH150-DAH150	AZ0565	2 1/2"-8	135	4 1/4"-16	20

**FITTINGS AND MANIFOLDS**

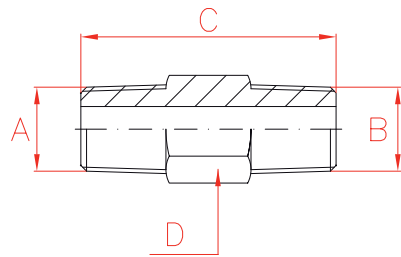


✓ Wide range of Fittings and Manifolds for multiple applications.

**HEXAGON NIPPLE**



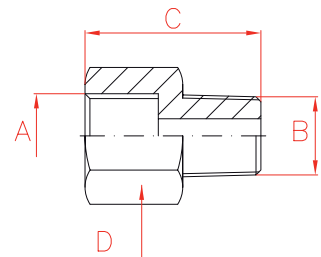
Model	A	B	C	D
LARZEP			mm	mm
AZ1102	3/8"-NPT	3/8"-NPT	45	19
AZ1103	3/8"-NPT	3/8"-NPT	66	19
AZ1104	3/8"-NPT	3/8"-NPT	100	22



**ADAPTOR**



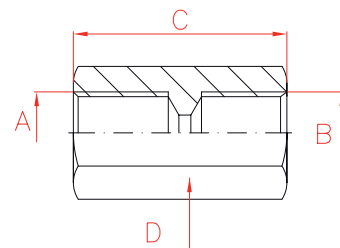
Model	A	B	C	D
LARZEP			mm	mm
AZ1112	3/8"-BSP	3/8"-NPT	36	27
AZ1113	3/8"-NPT	1/4"-BSP	36	27
AZ1114	3/8"-NPT	3/8"-BSP	36	27



**COUPLING**



Model	A	B	C	D
LARZEP			mm	mm
AZ1142	3/8"-NPT	3/8"-BSP	45	27
AZ1143	3/8"-NPT	3/8"-NPT	45	27



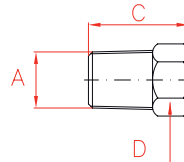


On request, LARZEP can supply other accessories to special requirements of threads and sizes.

**PLUG**



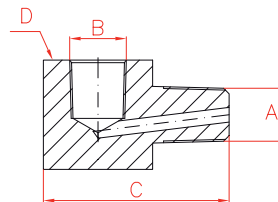
Model	A	C	D
LARZEP		mm	mm
AZ1182	3/8"-NPT	24	18
AZ1183	1/2"-NPT	28	22



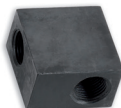
**ADAPTOR ELBOW**



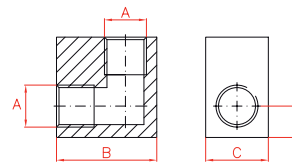
Model	A	B	C	D
LARZEP			mm	mm
AZ1511	3/8"-NPT	3/8"-BSP	51	30
AZ1512	3/8"-NPT	3/8"-NPT	51	30



**ELBOW**



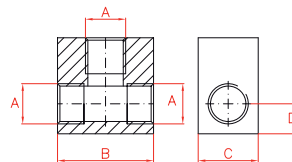
Model	A	B	C	D
LARZEP		mm	mm	mm
AZ1202	3/8"-NPT	40	25	12,5



**TEE**



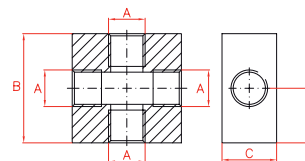
Model	A	B	C	D
LARZEP		mm	mm	mm
AZ1242	3/8"-NPT	40	25	12,5



**CROSS**



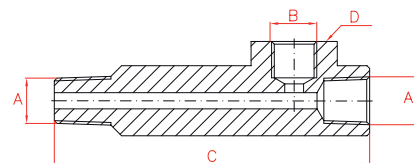
Model	A	B	C	D
LARZEP		mm	mm	mm
AZ1282	3/8"-NPT	50	25	24



**GAUGE ADAPTOR**



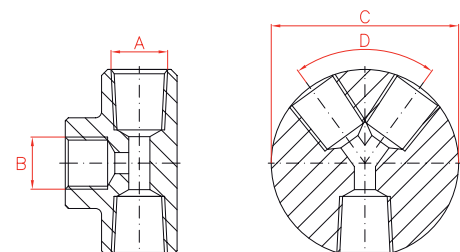
Model	A	B	C	D
LARZEP			mm	mm
AZ1501	3/8"-NPT	3/8"-BSP	117	35
AZ1502	3/8"-NPT	1/4"-NPT	98	35
AZ1507	3/8"-NPT	1/4"-BSP	98	35



**MANIFOLDS**



Model	A	B	C	D	Ports
LARZEP			mm	°	No.
AZ1602	3/8"-NPT	3/8"-BSP	62	90°	2
AZ1604	3/8"-NPT	3/8"-BSP	82	60°	4
AZ1606	3/8"-NPT	3/8"-BSP	102	48°	6



Type

**AZ1**

Capacity

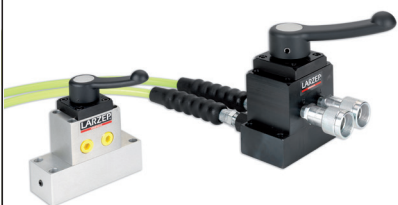
-

Max. pressure

**700 bar**



## DIRECTIONAL CONTROL VALVES



Type

**AZ8 - AZ9**

Capacity

4 - 30 l/min

Max. pressure

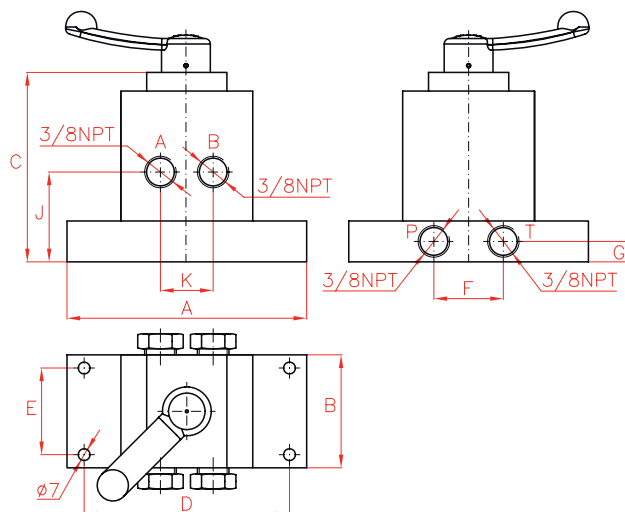
700 bar

## DIRECTIONAL CONTROL VALVES



AZ8 - AZ9 ACCESSORIES

- ✓ 3- or 4- ways directional control valves for single and double acting cylinders.
- ✓ Manually operated, without spring to centre.
- ✓ Suitable for remote operation.
- ✓ Possibility to select open or closed centre.



Symbol	Flow l/min	Model LARZEP	Operation Remote	Central Position	A mm	B mm	C mm	D mm	E mm	F mm	G mm	J mm	K mm
	4	<b>AZ8300</b>	Single act.	Open Centre	128	50	107	113	36,0	86	20	60	-
	30	<b>AZ9300</b>	Single act.	Open Centre	128	70	127	113	50,8	54	25	63	-
	4	<b>AZ8301</b>	Single act.	Closed Centre	128	50	107	113	36,0	86	20	60	-
	30	<b>AZ9301</b>	Single act.	Closed Centre	128	70	127	113	50,8	54	25	63	-
	4	<b>AZ8500</b>	Double act.	Open Centre	128	50	107	113	36,0	86	20	60	30
	30	<b>AZ9500</b>	Double act.	Open Centre	128	70	127	113	50,8	54	25	63	38
	4	<b>AZ8501</b>	Double act.	Closed Centre	128	50	107	113	36,0	86	20	60	30
	30	<b>AZ9501</b>	Double act.	Closed Centre	128	70	127	113	50,8	54	25	63	38



**PRESSURE GAUGES**

**PRESSURE GAUGES**

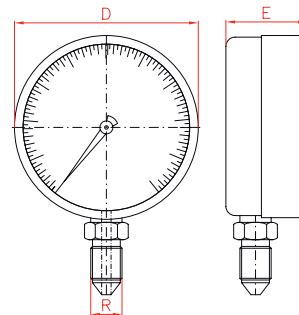


Type **AV-AVD-AT-AY**

Capacity **5 - 250 Tn**

Max. pressure **0 - 1.000 bar**

- ✓ High accuracy gauges,  $\pm 1.6\%$  full scale.
- ✓ Essential for monitoring working pressure or force.
- ✓ Glycerine filled gauges.
- ✓ Available as system pressure gauges or as dual scale gauges to measure load on specific cylinders.



**WARNING**

Do not exceed the 70% of the nominal capacity of the gauge.



Digital pressure gauge: **AVD10008**  
Thread: 1/4"-BSP  
Gauge adaptor: **AZ1507**



Pressure gauge for Hollow Cylinders: **ATH**  
Digital Pressure Transducer: **AVT**

Used with	Model	Type		Scale	D	E	R	Gauge Adaptor
		Tn	kg/cm <sup>2</sup>					
All Cylinders	<b>AV10006</b>	-	1000	50	68	31	1/4"-NPT	AZ1502
	<b>AV10008</b>	-	1000	20	80	35	3/8"-BSP	AZ1501
	<b>AV10010</b>	-	1000	10	100	35	3/8"-BSP	AZ1501
Cylinders	<b>AT00410</b>	5 / 10	1000	-	100	35	3/8"-BSP	AZ1501
	<b>AT01610</b>	16 / 23	1000	-	100	35	3/8"-BSP	AZ1501
	<b>AT03010</b>	30 / 50	1000	-	100	35	3/8"-BSP	AZ1501
	<b>AT07510</b>	75 / 100	1000	-	100	35	3/8"-BSP	AZ1501
	<b>AT15010</b>	150 / 200	1000	-	100	35	3/8"-BSP	AZ1501
Press 10 Tn	<b>AY01008</b>	10	-	0,5	80	35	3/8"-BSP	AZ1501
Press 20 Tn	<b>AY02008</b>	20	-	0,5	80	35	3/8"-BSP	AZ1501
Press 30 Tn	<b>AY03008</b>	30	-	2	80	35	3/8"-BSP	AZ1501
Press 60 Tn	<b>AY06010</b>	60	-	2	100	35	3/8"-BSP	AZ1501
Press 120 Tn	<b>AY12010</b>	120	-	4	100	35	3/8"-BSP	AZ1501
Press 250 Tn	<b>AY25010</b>	250	-	5	100	35	3/8"-BSP	AZ1501